



Advanced Installation Guide

Nitro PDF Pro 13

May 2022

Table of Contents

1	INTRODUCTION	4
2	INSTALLATION PREREQUISITES	4
2.1	SYSTEM REQUIREMENTS	4
2.2	INSTALLATION FILES (BUSINESS VS ENTERPRISE VS. NITRO LICENSING SYSTEM)	4
2.3	DEPLOYMENT UTILITY	5
3	INSTALLATION	5
3.1	LICENSE ACTIVATION	5
3.1.1	DURING DEPLOYMENT USING AN MST FILE (BUSINESS AND ENTERPRISE LICENSES)	6
3.1.2	AFTER INSTALLATION, USING THE NITRO PDF PRO USER INTERFACE (BUSINESS AND ENTERPRISE LICENSES)	6
3.1.3	AFTER INSTALLATION, USING THE ACTIVATESN.EXE TOOL (ENTERPRISE LICENSES)	7
3.2	STANDARD DEPLOYMENT ON PC/LAPTOP	8
3.3	MICROSOFT SCCM AND OTHER DEPLOYMENT SOLUTIONS	10
3.4	VIRTUAL DESKTOP INFRASTRUCTURES (VDI)	10
3.5	HOSTED DESKTOP / HOSTED APPLICATION	11
3.6	MICROSOFT APP-V	11
3.7	CITRIX PROVISIONING SERVICES / MACHINE CREATION SERVICES	14
3.8	ADDITIONAL OCR LANGUAGE PACKAGES	15
4	CUSTOMIZING MSI PROPERTIES	16
4.1	CUSTOMIZABLE MSI PROPERTIES	16
4.2	COMMAND PROMPT INSTALLATIONS	17
4.3	DEPLOYMENT UTILITY	18
4.3.1	“GENERAL” SETTINGS	18
4.3.2	“DEFAULT APPLICATIONS & ADD-ONS” SETTINGS	20
4.3.3	“SERIAL NUMBER” SETTINGS	22
4.3.4	“PRINT” SETTINGS	24
4.3.5	“IMANAGE WORK 10” SETTINGS	25
4.4	ORCA	26
5	UPDATING NITRO PDF PRO	27
5.1	MINOR / MAJOR RELEASE	27
5.2	PRESERVING CONFIGURATION SETTINGS	27
6	SPECIAL CONFIGURATIONS	28
6.1	SETTING A DEFAULT PDF APPLICATION USING AN ACTIVE DIRECTORY GPO	28
6.2	SETTING DEFAULT APPLICATIONS USING POWERSHELL SCRIPT	33
6.3	SETTING DEFAULT INTERNET EXPLORER ADD-ONS	35

6.4	CHANGING INTERNET EXPLORER DEFAULTS VIA REGISTRY KEY	36
6.5	PREVENTING NITRO PDF PRO OUTLOOK ADD-INS FROM BEING DISABLED	38
6.6	RIGHTS MANAGEMENT SERVICES (RMS) AND AZURE INFORMATION PROTECTION (AIP)	40
6.7	IMANAGE WORK 10	40
6.7.1	IMANAGE WORK 10 INTEGRATION DEPLOYMENT	40
6.7.2	HOW TO ENABLE IMANAGE INTEGRATION WITH DEPLOYMENT TOOL	42
6.8	SHAREPOINT ONLINE EXTENSION	45
6.8.1	SHAREPOINT ONLINE EXTENSION DEPLOYMENT	45
6.8.2	CONSENT	48
6.8.3	EXPLAINING OAUTH ACCESS TOKEN MANAGEMENT	48
7	CONTACTING SUPPORT	49

1 Introduction

To serve the wide variety of management and deployment needs of different organizations, Nitro PDF Pro has many installation options. This guide details those options as well as how to accommodate other scenarios such as advanced integrations or installing to non-standard environments.

The Nitro MSI deployment package is designed for enterprise environments where applications are deployed business-wide. To better suit a large user base, and to better conform with typical internal security policies and user rights, some front-end options have been disabled.

The following guide explains best practices and requirements in relation to various deployment methods. These settings can be applied in a number of different ways to suit individual customers' requirements and preferences.

Please note that Nitro PDF Pro is also available as an executable (.exe) installer. This file is provided for single-user retail customers and is not covered by the instructions below. All methods described in this document apply only to the MSI (.msi) deployment package.

If you require any further assistance, please refer to the Nitro Knowledge Base or Support Forum or contact Nitro Customer Support ([see Section 7](#)).

2 Installation prerequisites

2.1 System requirements

Desktops: Windows 10 and 8 (64 bit)

Servers: Microsoft Windows Server 2008 R2, 2012, 2012 R2 (64 bit), 2016

Processor: 1.5 GHz or faster

RAM: 1GB

Available hard disk space: 4.5GB

Display screen resolution: 1024x768

Microsoft Office integrated features: MS Office 2013 (32bit or 64bit), MS Office 2016 (32bit or 64bit), Microsoft Office 2019 (32bit or 64bit)

Video hardware acceleration (optional)

To support **iManage integration:**

- server: iManage 10.2 and newer (cloud or on-premises)
- client: iManage Work Desktop for Windows 10.5 and newer

2.2 Installation Files (Business vs Enterprise vs. Nitro Licensing System)

Nitro PDF Pro uses three different licensing methods—Business, Enterprise, and the Nitro Licensing System (NLS)—which correlate with the type of license purchased.

Please ensure you are using the correct MSI package based on your license type.

All three MSI packages contain the same version of Nitro PDF Pro and provide the same features, but the licensing system differs based on your license type. The three types of MSI packages are difficult to distinguish before being installed so caution is recommended. The best way to determine your license type is to review the product details email sent to you by Nitro after starting your subscription. This email includes both your license code as well as links to the appropriate MSI. For further reference, please review table below outlining the differences:

License Type	License Code Format	Installer Link
Business	An 18 digit numeric code within the email	http://www.gonitro.com//installers/business/v13/msi/download
Enterprise	A .lic file attached to the email with a 32 digit name	http://www.gonitro.com/en/installers/enterprise/v13/msi/download
NLS	No license code. Admins manage user licenses within Nitro Admin	https://www.gonitro.com/installers/nls/v13/msi/download

PLEASE NOTE: Using the wrong license/deployment package combination will result in a failed activation of Nitro PDF Pro, and the application will need to be reinstalled using the correct deployment package.

2.3 Deployment Utility

The Deployment Utility is a visual configuration tool that makes it easy to create an MST file that applies your custom configurations to your Nitro PDF Pro deployment. It provides one of the methods of customizing MSI properties described in [Section 4](#).

The utility will allow customization for the Business, Enterprise and NLS deployment packages and is available on the same download pages as Nitro PDF Pro. Please note that it is recommended to have the same version of the Deployment Tool as Nitro PDF Pro.

3 Installation

Nitro PDF Pro can be installed using one of two methods:

1. Starting the MSI file and completing the installation wizard
2. Using the command line or a script to run the msixec command.
3. Deploying via a software package, e.g. Microsoft System Center Configuration Manager (SCCM), usually utilises one of the above methods.

NOTE: Certain deployment methods have special requirements. Please refer to the following sections in this chapter for more information. Failure to fulfil the requirements detailed may result in a non-working deployment of Nitro PDF Pro.

3.1 License activation

Nitro PDF Pro with Business or Enterprise licenses must be activated using one of the methods listed below. Nitro PDF Pro with NLS does not need activation, but users do need to log in prior to using the full feature set of Nitro PDF Pro. Business or Enterprise Licenses can be activated with one of these methods:

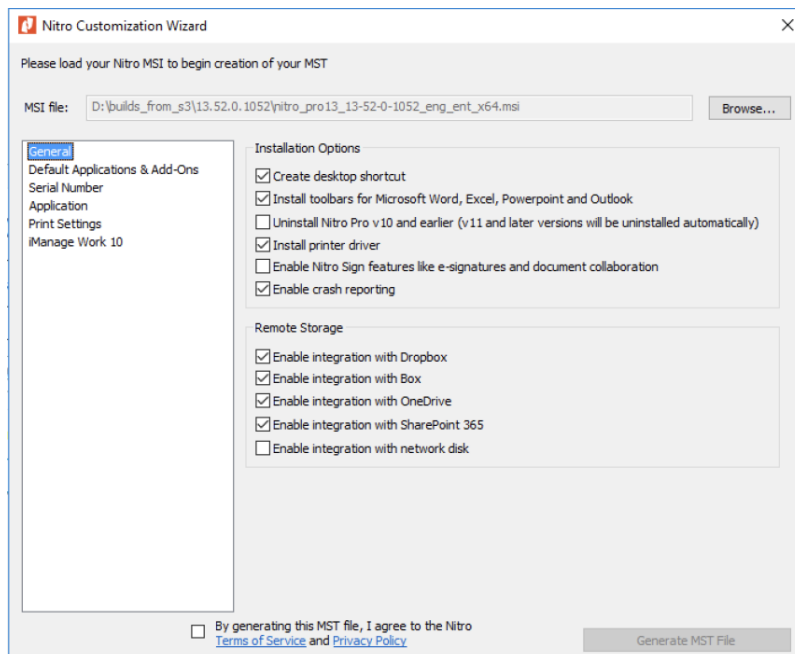
1. During deployment, provide an MST file that contains the license
2. After installation through the Nitro PDF Pro user interface
3. After installation using the ActivateSN.exe tool, either scripted or via command prompt (Enterprise license only). The license file can be opened with Notepad to extract the data.

3.1.1 During deployment using an MST file (Business and Enterprise licenses)

There are several methods to adjust MSI properties during the installation, see [Chapter 4: Customizing MSI Properties](#) for more information.

EXAMPLE: using the Enterprise Deployment Utility to create an MST file containing the license

- 1) Open the Enterprise Deployment Utility (Nitro_EnterpriseDeployment.exe)
- 2) Click “Browse” and open the Nitro PDF Pro .msi file



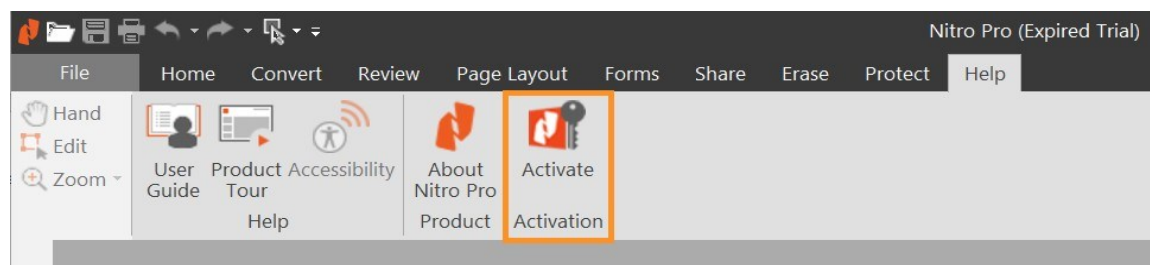
- 3) Switch to the “Serial Number” section and add your Business or Enterprise license
- 4) Click “Generate MST File”. The file will be saved in the same locations as the MSI file opened in step 1.
- 5) Nitro PDF Pro can now be installed by using the MSI and the MST file, e.g. by running the following command in CMD window:

```
Msiexec -i <path to MSI file> TRANSFORMS=<path to MST file>
```

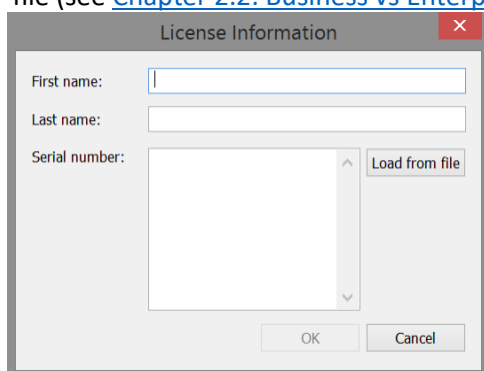
3.1.2 After Installation, using the Nitro PDF Pro User Interface (Business and Enterprise licenses)

Once Nitro PDF Pro is installed, go to the Help tab, and click on the “Activate” button. You will be presented

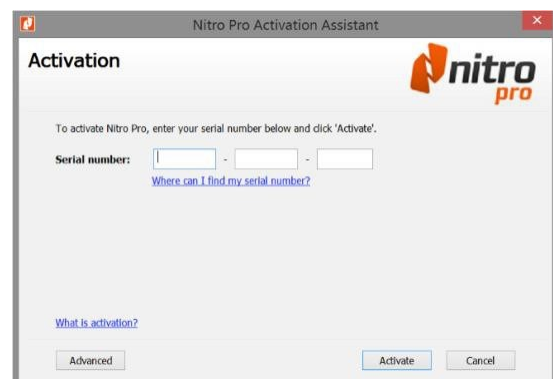
with a popup window prompting for license information.



If the window asks for first name, last name, and a serial number, it expects an Enterprise license to be entered. If you have a Business license, you need to reinstall Nitro PDF Pro using the correct installation file (see [Chapter 2.2: Business vs. Enterprise vs. NLS licensing](#)).



If the window asks for a serial number only, it expects a Business license to be entered (again, reinstall if this is the wrong type of license for you).



After activation, the “Activate” button disappears from the user interface. You can click on “About Nitro PDF Pro” to deactivate, if necessary.

3.1.3 After installation, using the ActivateSN.exe Tool (Enterprise Licenses)

This tool is installed with Nitro PDF Pro in the same install location (usually C:\Program Files\...), but only for Enterprise licenses. It can be called via a script or a command line, using the following syntax:

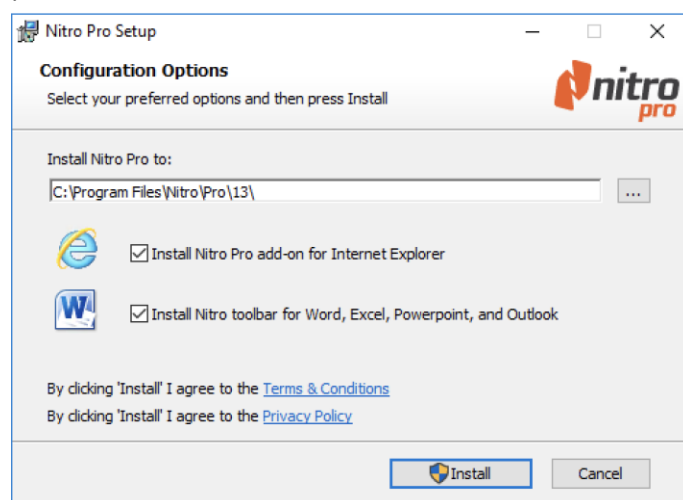
"C:\Program Files\Nitro\Pro\13\ActivateSN.exe" -s <INSERT-SERIAL- NUMBER-HERE>

It is also possible to disable encryption of the license, which is required by certain deployment methods as described in the following sections. Example:

"C:\Program Files\Nitro\Pro\13\ActivateSN.exe" -e false -s <INSERT- SERIAL-NUMBER-HERE>

3.2 Standard deployment on PC/Laptop

Nitro PDF Pro can be installed on a Windows-based computer that meets the prerequisites by simply starting the MSI installation file with a double-click. Using that method, some customizations are possible, see below.



Set Nitro PDF Pro as the default handler for PDF files

When checked, the installation process will set Nitro PDF Pro as your default PDF application. When unchecked, it will leave the application that is currently set as the default PDF application on your computer.

NOTE: Due to a change in the behaviour of Windows 8 and later, this option is not possible for those operating systems. The default application must be set manually after installation, or automatically following one of the methods described in [Chapter 6](#).

Install Nitro PDF Pro Plugin for Internet Explorer

When checked this will install the Nitro PDF Pro add-in that allows the opening of PDF files from webpages within the Internet browser. It will also set the Nitro add-in as default, meaning that if other PDF add-ins have been installed previously, they will no longer be used to open PDF files in the browser. If you prefer to use your existing add-ins, leave this box unchecked.

Install Nitro toolbar for Word, Excel, PowerPoint, and Outlook

When checked, this will install and activate the Nitro PDF Pro MS Office plugin, which adds the Nitro PDF Pro ribbon to the user interface of the listed applications. It will not deactivate or overwrite any other Office add-ins you may be using.

NOTE: If you require any additional customisation of the installation procedure or application settings, please refer to [Chapter 4: Customising MSI Properties](#).

3.3 Microsoft SCCM and other Deployment Solutions

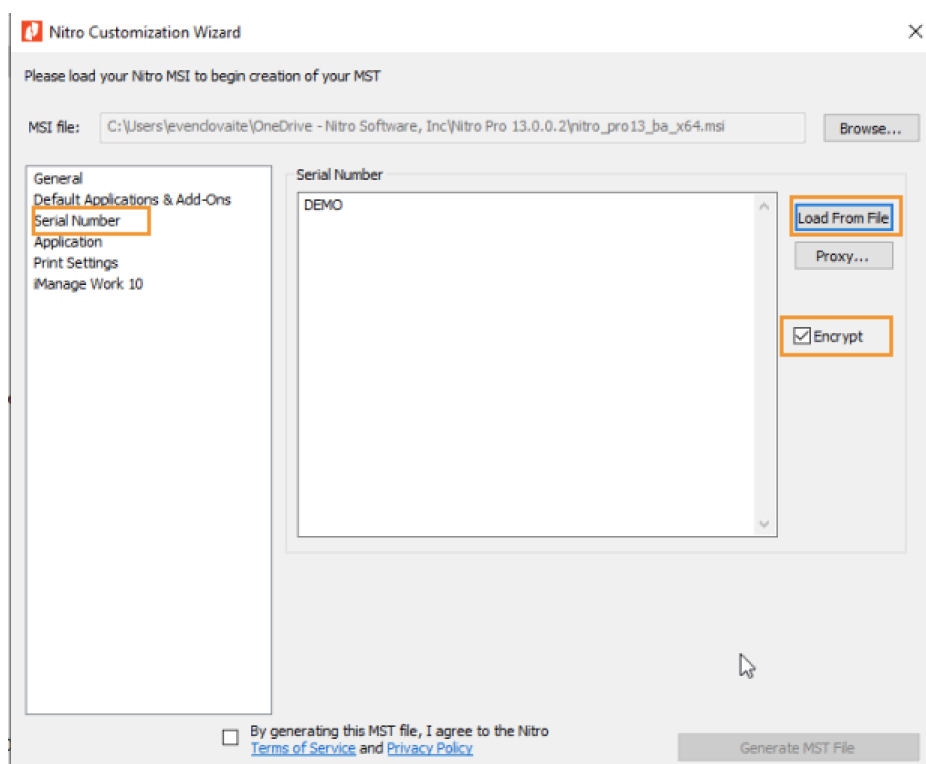
If you use Microsoft SCCM (or a similar solution) to deploy MSI-based application packages, you can use it to deploy Nitro PDF Pro like any other application in your environment. Command line switches, or an MST (transform) file, can be used to customize the installation. Please see [Chapter 4: Customizing MSI Properties](#) for more information.

3.4 Virtual Desktop Infrastructures (VDI)

Nitro PDF Pro is fully supported for deployment on VDI infrastructures, such as Citrix XenDesktop or VMWare Horizon. Installation can be performed similarly to any other MSI-based application in your environment, with the following considerations:

- 1) All deployments to virtual machines (i.e. where Nitro PDF Pro is installed and running on virtual hardware and/or virtualized operating systems) require an **Enterprise or NLS license**. Please refer to [Chapter 2.2: Enterprise vs Business vs. NLS Licensing](#).
- 2) Where a “master image” is being used to deploy to multiple identical hosts, encryption of the license key needs to be disabled when installing Nitro PDF Pro on the master image. This can be done using the methods described in [Chapter 4: Customizing MSI Properties](#). If you are using the NLS Licensing option, this step not needed.

Example: use the Enterprise Deployment Utility to create an MST file with the following settings:



NOTE: The license is encrypted by default. If the license key in use needs to be replaced after installation, the method using the ActivateSN.exe as described in Chapter 3.1: License Activation needs to be followed. Using the Nitro PDF Pro UI to change the license key will encrypt it.

3.5 Hosted Desktop / Hosted Application

Nitro PDF Pro is fully supported for deployment on hosted desktop or hosted application environments, such as Citrix XenApp or Microsoft Remote Desktop Services. Installation can be performed similarly to any other MSI-based application in your environment, with the following considerations:

- 1) All deployments to virtual machines (i.e. where Nitro PDF Pro is installed and running on virtual hardware and/or virtualized operating systems) require an **Enterprise or NLS license**. Please refer to [Chapter 2.2: Enterprise vs Business vs NLS Licensing](#).
- 2) If an **Enterprise license** is used, access to Nitro PDF Pro must be controlled by e.g. using an Active Directory GPO, AppLocker, or the published application settings in the Citrix admin console. Failure to do so may result in accidental overuse of the license.
- 3) For **Business licensing**, a “server license” is required, which has two constraints: number of activations (A) and number of users per server (B). Number of activations limits the number of servers on which Nitro PDF Pro can be installed. Number of users limits the number of simultaneous instances of Nitro PDF Pro that can be run on a single server. Once (B) has been reached, any subsequent users connecting to the same server will not be able to launch Nitro PDF Pro. If Nitro PDF Pro is registered as the default PDF viewer for that user, this may lead to issues unless you provide an alternative. The product of (A) x (B) equals the total number of licenses purchased, which must be at or below the total number of Nitro users in the environment.

NOTE FOR ALL POINTS ABOVE: Nitro does not offer concurrent user licensing at this time. The number of licenses purchased must equal or exceed the total number of Nitro users in the environment, even if the number of concurrent users at any given time is lower than that.

- 4) Installation should be completed using **InstallApplication on Terminal Server**, found under the Control Panel. See the Microsoft best practices article: [http://technet.microsoft.com/en-us/library/cc742815\(Ws.10\).aspx](http://technet.microsoft.com/en-us/library/cc742815(Ws.10).aspx)
- 5) If you choose to install the Nitro PDF Pro add-ins for Microsoft Office or Internet Explorer, please note that the add-ins will be installed for all users. However, the load behavior of the add-ins can be controlled on a per user or per group basis using AD GPOs – see [Chapter 7: Special Configurations](#).

3.6 Microsoft App-V

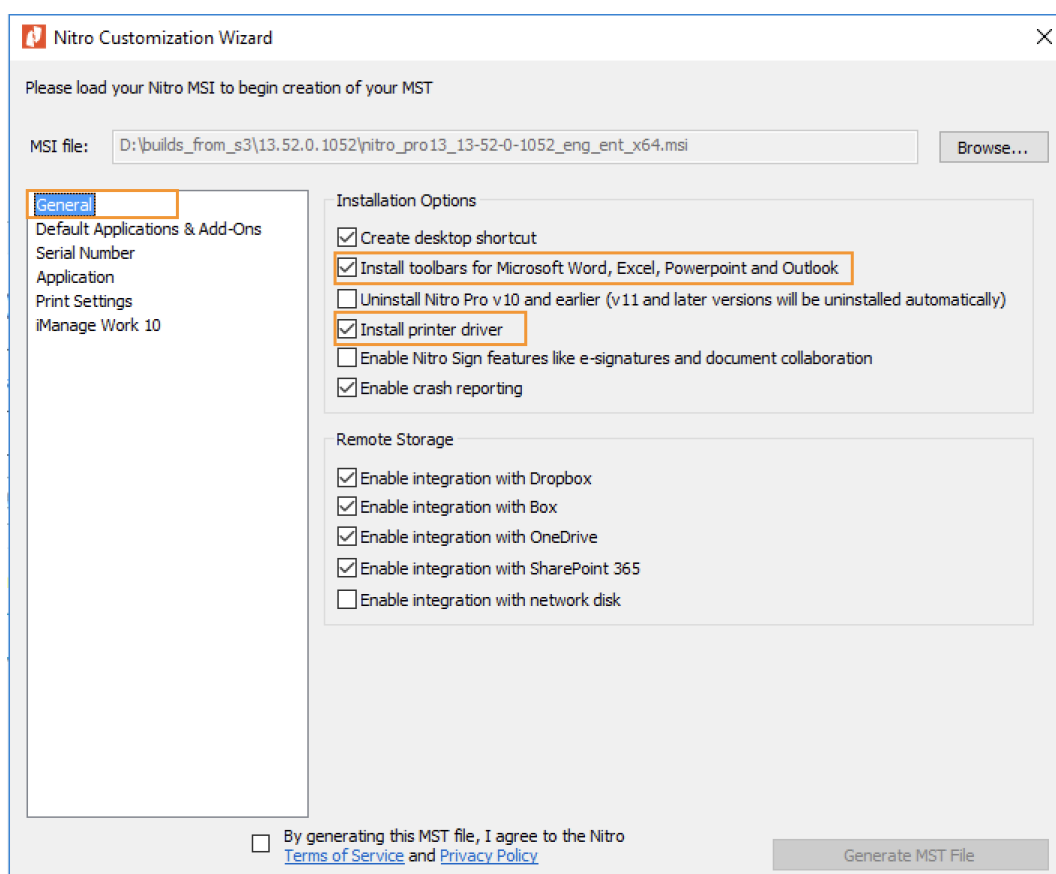
Nitro PDF Pro can be deployed using App-V; however, there are several considerations. Please ensure you understand the points below to achieve a successful outcome.

- 1) Deployment via App-V requires an **Enterprise or NLS License**. Please refer to [Chapter 2.2: Enterprise vs Business vs NLS Licensing](#).
- 2) Encryption of the license key needs to be disabled when sequencing the App-V package. This can be done using the methods described in [Chapter 4: Customizing MSI Properties](#) (see example below).

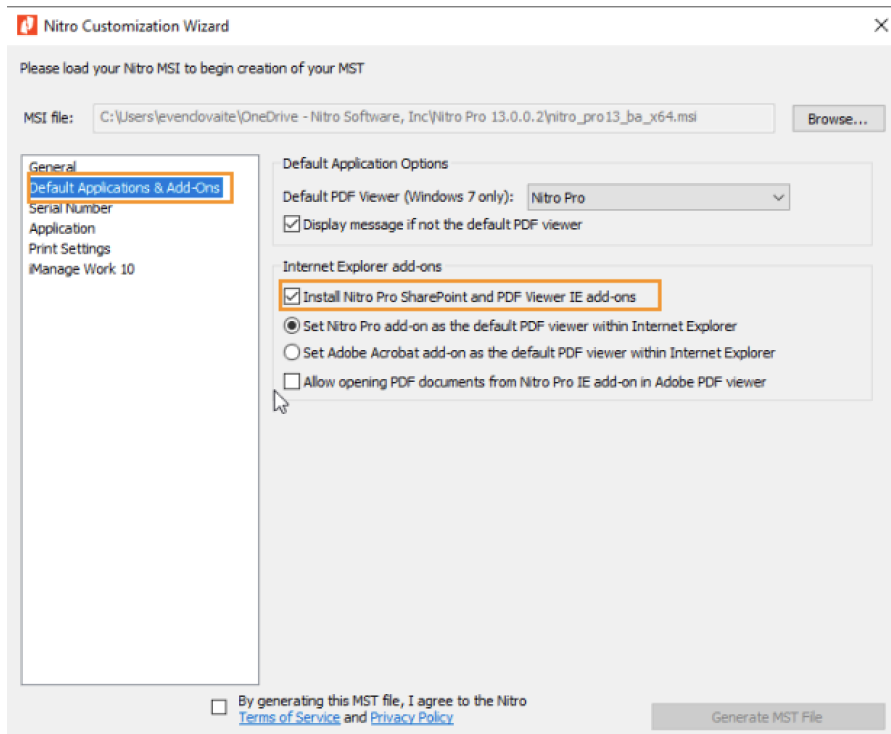
- 3) It is recommended to use Nitro PDF Pro 12.0.0 or later, and App-V versions 5.1 or later.
- 4) The Nitro PDF Pro add-ins for Microsoft Office and Internet Explorer are not supported in an application streaming deployment.
- 5) The Nitro PDF Creator (printer) cannot be streamed via App-V and must be excluded from the App-V package. However, this tool is necessary for creating PDF files and converting other file formats to PDF, and it must be installed separately on all target devices, as per instructions below. Please contact Nitro Support to obtain the standalone printer installation file.

Example: Creating an MST file using the Deployment Utility

- 1) Open the Enterprise Deployment Utility (Nitro_EnterpriseDeployment.exe)
- 2) Click “Browse” and open the Nitro PDF Pro .msi file
- 3) On the “General” tab, disable the following settings:
 - a. Install toolbars for Microsoft Word, Excel, PowerPoint
 - b. Install printer driver

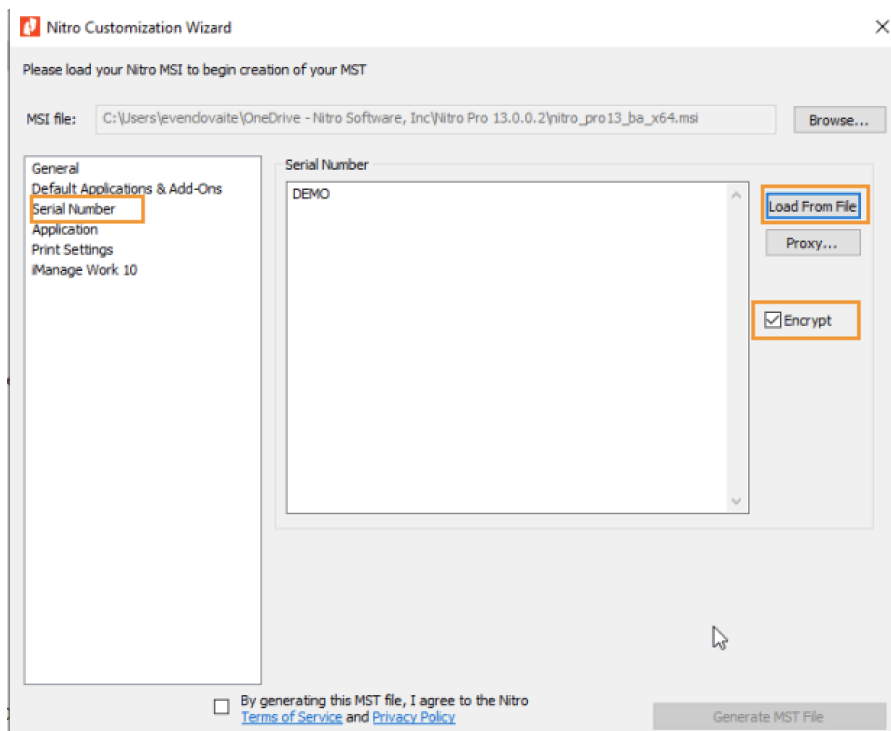


- 4) On the “Default Applications & Add-Ons” tab, disable the following setting:
 - a. Install Nitro PDF Pro SharePoint and PDF Viewer IE add-ons



5) On the “Serial Number” tab (not needed for NLS License)

- a. Click “Load From File” and import your Enterprise license from the .lic file
- b. Uncheck the “Encrypt” setting



- 6) Tick the box to agree to Terms of Service and click "Generate MST File. The file will be saved in the same location as the MSI file opened at step 2.

Sequencing Nitro PDF Pro in App-V

- 1) Start the Sequencing Wizard, select File / New Package. For more information, please refer to <https://technet.microsoft.com/en-us/library/cc817128.aspx>
- 2) Install Nitro PDF Pro with the transform file (MST file)
 - a. Open command prompt as administrator and start the installation using the msixec command
Example:

```
msiexec /i "C:\nitro_XXXX.msi" TRANSFORMS="C:\nitro_XXXX.mst"
```
- 3) On the Launch Application page, start the application and click Launch (this step is optional)
- 4) On the Sequence Package page, click Finish

Install the standalone driver on the target device master image

- 1) Install the Creator to any folder except "Program Files" or "Program Files (x86)"
- 2) Use the "INSTALLLOCATION" PROPERTY to specify the folder path:
- 3) Open command prompt as an Administrator
- 4) Run the following command:

```
msiexec /i Nitro_Creator_x64.msi INSTALLLOCATION="c:\Nitro\Creator"
```
- 5) Reboot

3.7 Citrix Provisioning Services / Machine Creation Services

Nitro PDF Pro is fully supported on devices with streamed operating systems using Citrix PVS or MCS. The following considerations must be met for successful deployment:

- 1) All deployments to streamed operating systems require an Enterprise or NLS license. Please refer to [Chapter 2.2: Enterprise vs Business vs NLS Licensing](#).
- 2) Encryption of the license key needs to be disabled when deploying Nitro PDF Pro. This can be done using the methods described in [Chapter 4: Customizing MSI Properties](#)
- 3) If, in addition to PVS/MCS, other technologies such as e.g. XenApp or App-V are used to provide access to Nitro PDF Pro for users, please refer to the relevant sections of this guide for additional requirements.

3.8 Additional OCR language packages

There are multiple OCR language packages built-in to Nitro PDF Pro: Brazilian, Danish, Dutch, English, Finnish, French, German, Italian, Norwegian, Portuguese, Spanish, and Swedish. These OCR languages are available in each build of Nitro PDF Pro.

Nitro PDF Pro also allows to extend the OCR language set by installing additional OCR language packages:

- Simplified Chinese
- Japanese
- Russian
- Ukrainian.

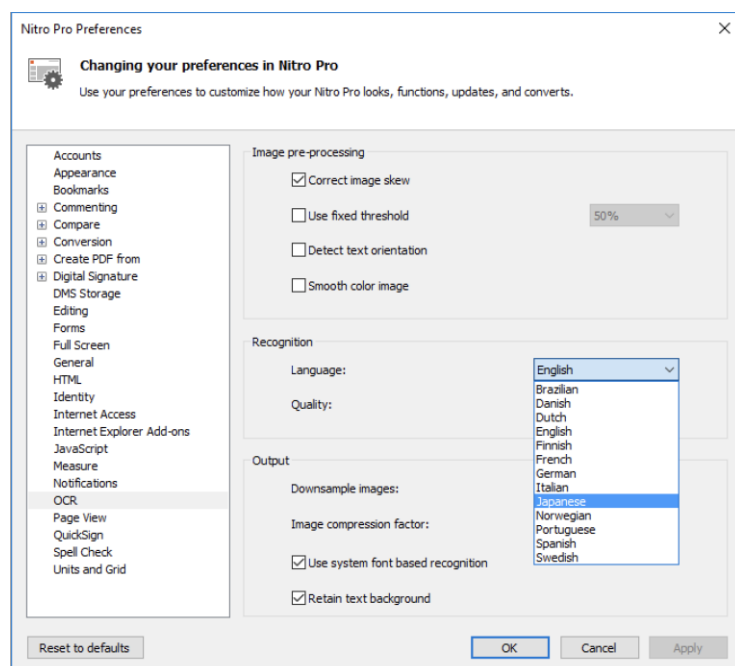
Each additional OCR language package should be installed on top of the existing Nitro PDF Pro installation. They are version specific. To install:

1. Download the OCR installer that corresponds with the Nitro PDF Pro version:
 - o Business Installers: <https://www.gonitro.com/installers/business/v13/msi/download>
 - o Enterprise Installers: <https://www.gonitro.com/installers/enterprise/v13/msi/download>

Since OCR language packages are version specific, it is recommended that when upgrading Nitro PDF Pro, the corresponding OCR packages are upgraded to the same version as well.

2. From File Explorer, right-click on the downloaded OCR installer file (.exe) and choose “Run as Administrator”.

After installing, the user can select the OCR language recognition by going to File > Preferences > OCR > select the installed language from the dropdown under “Languages”.



4 Customizing MSI Properties

Many properties of the MSI deployment package can be customized by using a command prompt, or by creating an MST file to be used by the installation process. The table below is a partial list of customizable properties, followed by specific examples using the available methods of customization. If you require additional customization, please contact Nitro Support.

NOTE: The Deployment Utility is the most convenient and recommended method of adjusting MSI properties. A command prompt can be used to adjust many, but not all, of these settings and is commonly used if only one or two simple settings need to be changed.

ORCA can be used to make very extensive changes to the installation process, but not all the possible options are documented in this guide. It is highly recommended that only experienced admins use this tool.

4.1 Customizable MSI properties

Properties	Description
NPSERIAL	Enter your Enterprise or Business license number. Not required for NLS licenses
PROXYSERVER	Business and NLS licenses require Internet access to activate Nitro PDF Pro. If you are using a proxy server, please specify the required information in the format 'server:port' (example: 169.0.0.11:8080)
PROXYUSER	Username for Internet access via a proxy server
PROXYPASS	Password for Internet access via proxy server
DT_SHORTCUT	Create a desktop shortcut for Nitro PDF Pro (Yes=1/No=0)
OFFICEADDINS	Install Nitro PDF Pro add-ins for MS Office (Yes=1/No=0)
NP_PDF	Default PDF file association (e.g. NitroPDF.Document.10, AcroExch.Document)
NP_FDF	Default FDF file association (e.g. NitroPDF.FDFDoc.10, AcroExch.FDFDoc)
MAXCPUCOREUTILIZATION	Maximum number of CPU cores to be used by Nitro PDF Pro 0 = automatically allocate number of cores to be used (default) 1 = 1 core (recommended for Citrix and Terminal Server deployments) 2 = 2 cores 3 = 3 cores 4 = 4 cores
CLOUDENABLE	Enable Nitro PDF Pro to connect to Nitro Sign (adds relevant buttons to the UI)

DROPBOXDISABLED	Configure connection to Dropbox storage from within Nitro PDF Pro (Disabled=1/Enabled=0)
ONEDRIVEDISABLED	Configure connection to OneDrive storage from within Nitro PDF Pro (Disabled=1/Enabled=0)
GOOGLEDRIVEDISABLED	Configure connection to Google Drive storage from within Nitro PDF Pro (Disabled=1/Enabled=0)
NPBROWSERPLUGIN	Install Nitro PDF Pro Internet browser add-in (Yes=1/No=0)

4.2 Command Prompt Installations

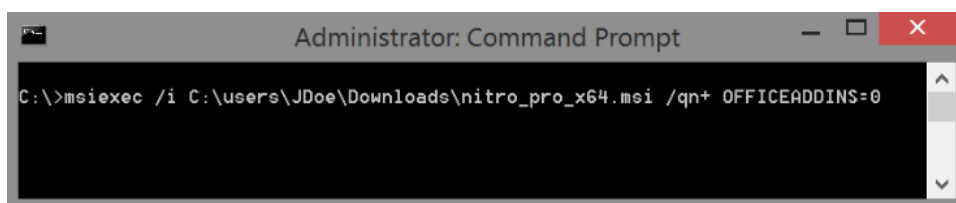
Msiexec.exe is a Windows program that interprets and installs application packages. It can be used via the command prompt (CMD) or a script. More information and a full list of options are available at [https://msdn.microsoft.com/en-us/library/windows/desktop/aa367988\(v=vs.85\).aspx](https://msdn.microsoft.com/en-us/library/windows/desktop/aa367988(v=vs.85).aspx). The utility can be used to simply install Nitro PDF Pro, but also to customize many of the parameters documented in this chapter.

The basic syntax of the command to install an application is:

```
msiexec /i InstallationFile /<options> Property=Value
```

Example: Use command line installation to customize the “OFFICEADDINS” property

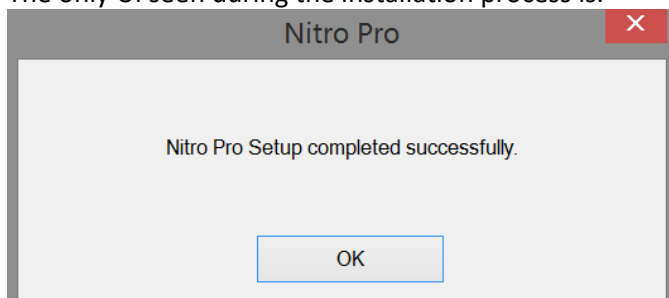
```
msiexec /i C:\users\JDoe\Downloads\nitro_pro_x64.msi /qn+ OFFICEADDINS=0
```



This installs Nitro PDF Pro from the Downloads folder of the user JDoe

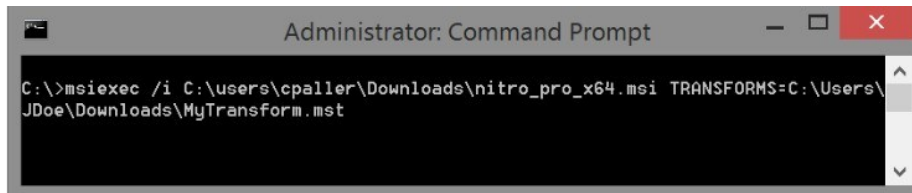
- The option “/qn+” suppresses all user interface messages, with the exception of a confirmation pop-up at the end (this option requires running the command prompt as an administrator)
- The property “OFFICEADDONS=0” installs Nitro PDF Pro without its MS Office add-ons:

The only UI seen during the installation process is:



Alternatively, a Transform File (.mst) can be created using the methods described in the following sections. This file can contain various properties that will be used by the installation process when using the following command:

```
msiexec /i C:\users\JDoe\Downloads\nitro_pro_x64.msi
TRANSFORMS=C:\users\JDoe\Downloads\myMSTfile.mst
```



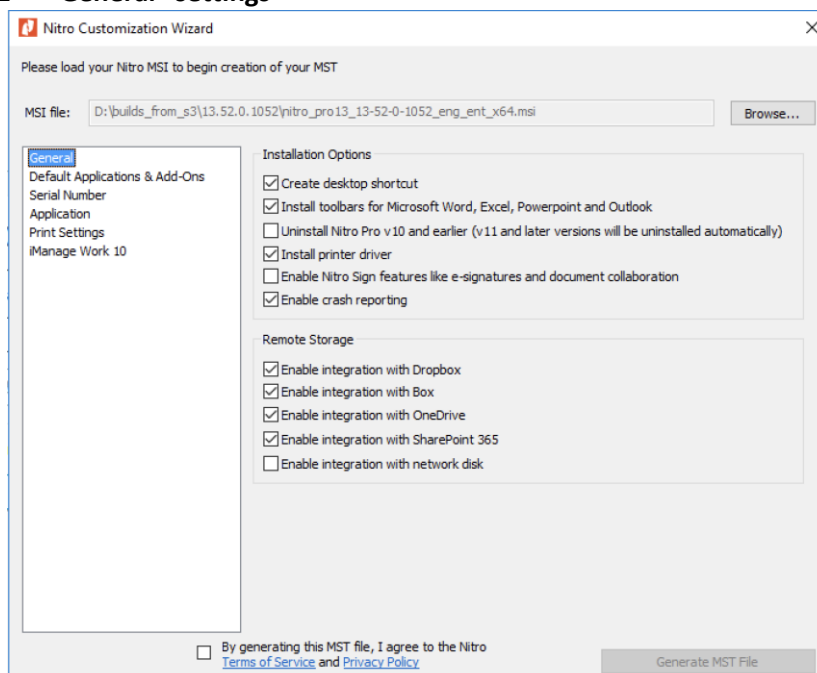
4.3 Deployment Utility


The Deployment Utility is a visual configuration tool that makes it easy to create an MST file that applies your custom configurations to your Nitro PDF Pro deployment. It provides one of the methods for customizing MSI properties.


The following screenshots show the default settings used by the Nitro PDF Pro installation, and the tables explain the customizations possible using the Deployment Utility.

NOTE: Nitro recommends any setting checked by default to be left as-is, unless otherwise noted. The Nitro Sign feature is not checked by default via the Deployment Utility. Ensure it is checked if you desire to use that functionality.

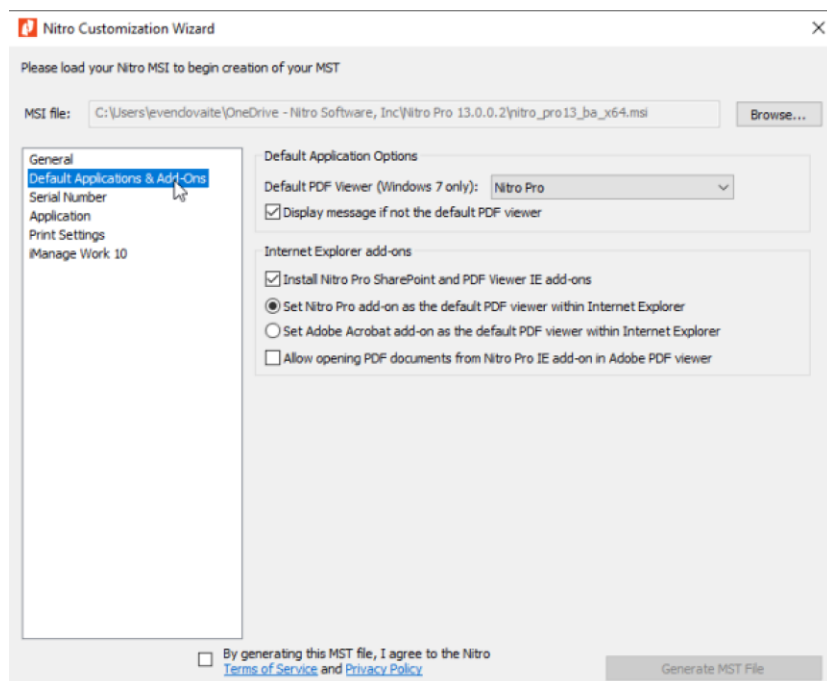
4.3.1 “General” settings



Setting	MSI Property	Description	
Create desktop shortcut	DT_SHORTCUT	Leaving this box checked will result in a Nitro PDF Pro desktop icon/shortcut being added to the users' desktops.	
Install toolbars for Microsoft Word, Excel, PowerPoint	OFFICEADDINS	Leaving this box checked will install the Nitro PDF Pro plugin directly to the Office toolbar/ribbon, allowing PDFs to be easily created/converted directly from the MS Office applications Word, Excel, PowerPoint, and Outlook.	
Uninstall Nitro PDF Pro v10 and earlier (v11 will be uninstalled automatically)	NITRO10_UNINSTALL	Checking this box will uninstall previous major versions (e.g. Nitro PDF Pro 10.x.x) when installing Nitro PDF Pro 13. Nitro PDF Pro 11.x.x and 12.x.x will be uninstalled regardless of this setting.	
Install printer driver	INSTALL_PRINTER_DRIVER	Leaving this box checked will install the Nitro PDF Creator. Installation without the printer driver is required for App-V deployments. For all other deployments, unchecking this setting will prevent users from being able to create PDF files.	
Enable Nitro Sign features like e-signatures and document collaboration	CLOUDENABLE	Checking this box will enable Nitro Sign to be accessed directly from Nitro PDF Pro. Leaving this box unchecked will suppress all direct links to Nitro Sign and its functionality.	
Enable crash reporting	(Registry) kBugsplatEnableCrashReporting	Leaving this box checked will provide users with the option to submit a Bugsplat crash report should Nitro PDF Pro terminate after encountering an issue. The Crash Reporter will send a detailed report that will help Nitro's engineers to diagnose the issue.	

Enable integration with Dropbox	DROPBOXDISABLED	Leaving this box checked will enable users to access PDF documents directly from Dropbox.	
Enable integration with Box	BOXDISABLED	Leaving this box checked will enable users to access PDF documents directly from Box.	
Enable integration with OneDrive	ONEDRIVEDISABLED	Leaving this box checked will enable users to access PDF documents directly from OneDrive accounts.	
Enable integration with SharePoint 365	SHAREPOINT365DISABLED	Leaving this box checked will enable users to access PDF documents directly from SharePoint 365.	
Enable integration with network disk	(Registry) network_disk_enabled	Checking this box will enable Nitro PDF Pro to use a local copy of a file instead of writing changes directly to remote storage, until the document is saved or closed in Pro. This provides a reduction in network traffic on over utilized networks and should ONLY be used in an environment with extremely unreliable or a slow network (i.e.: sub-Mbit connection).	

4.3.2 “Default Applications & Add-Ons” settings

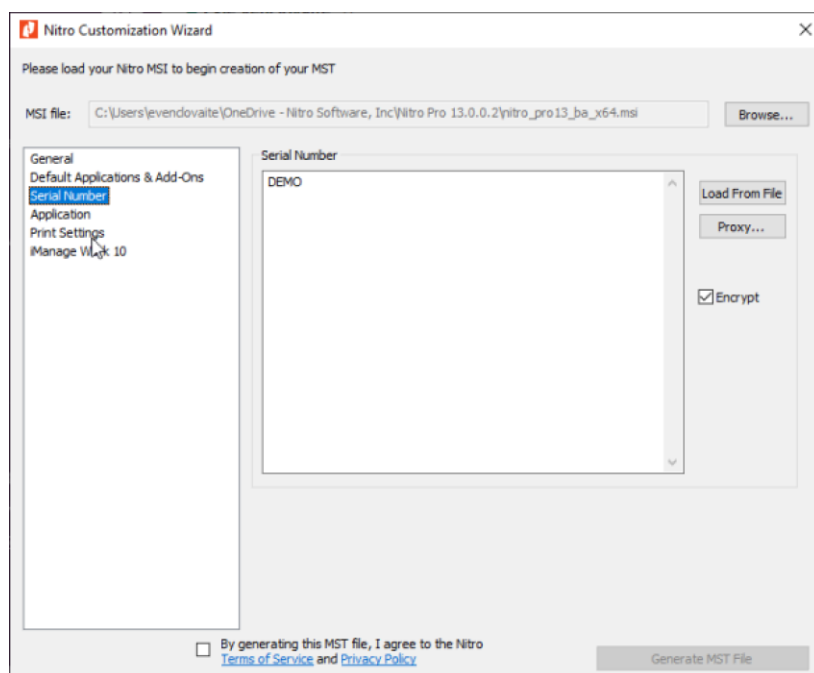


Setting	MSI Property	Description	
Default PDF Viewer (Windows 7 only)	NP_PDF, NP_FDF	Set the default PDF application by selecting it from the dropdown. NOTE: Due to a change in the behaviour of Windows 8 and later, this is not possible for those operating systems. The default application must be set manually after installation, or automatically following one of the methods described in Chapter 7.	
Display message if not the default PDF viewer	(Registry) kPrefGeneralMsgIfNotDefaultPDFViewer	If this box is checked, users will receive a notification that Nitro PDF Pro is not the default PDF viewer.	
Install Nitro PDF Pro SharePoint and PDF Viewer IE add- ons	NPBROWSERPLUGIN	Checking this box will install the Nitro PDF Pro Internet browser add-ons. The SharePoint IE add-on will allow opening files from SharePoint. The PDFViewer add-on will enable viewing of PDFs in the web browser.	

Set Nitro PDF Viewer IE add-on as default	SET_DEFAULT_MIME_GUID	PDF documents opened in Internet Explorer will use the Nitro PDF Pro add-on.	
Set Adobe Acrobat PDF Viewer IE add-on as default	SET_DEFAULT_MIME_GUID	PDF documents opened in Internet Explorer will use the Adobe Acrobat add-on. NOTE: Checking this box will not install or enable the Adobe Acrobat IE add-on. If the Adobe Acrobat add-on is not already installed or enabled at the time Nitro PDF Pro is installed, it will need to be installed separately.	
Allow opening PDF documents from Nitro PDF Pro IE add-on in Adobe PDF viewer	IE_ALLOW_ADOBE_BUTTON	Checking this box will allow PDF documents opened in IE with Nitro PDF Pro to be opened in Adobe Acrobat in a single click.	

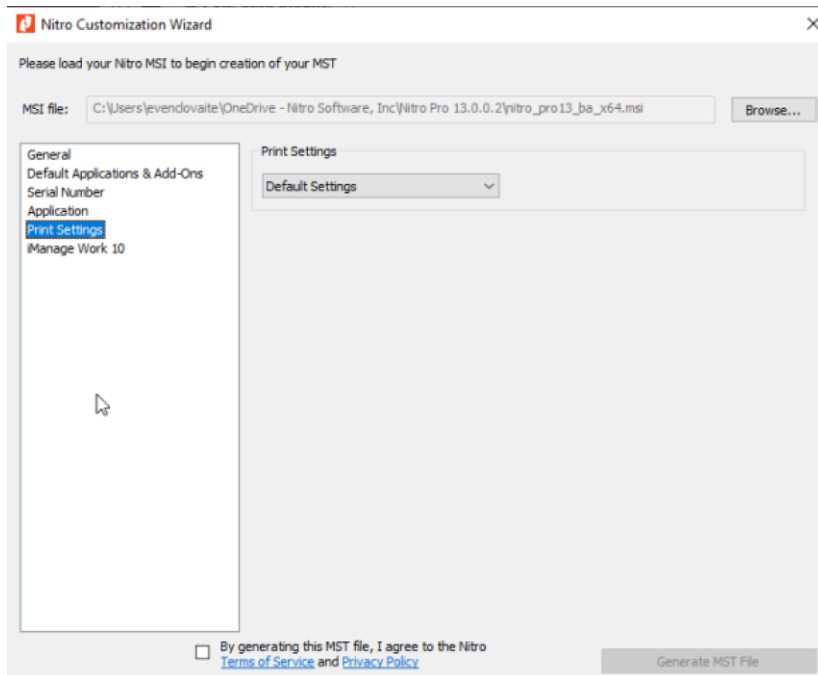
4.3.3 “Serial Number” settings

NOTE: Serial Number settings are not needed or available when customising the NLS edition of Nitro PDF Pro.



Load From File / Textbox	NP SERIAL	Click “Load from File” to upload your Nitro PDF Pro license file (.lic) if you are using an Enterprise license; paste your license code into the text field if you are using a Business license	
Proxy...	PROXYSERVER, PROXYUSER, PROXYPASS	Business licenses require Internet access to activate Nitro PDF Pro. If you are using a proxy server, please specify the required information in the format 'server:port' (example: 169.0.0.11:8080), as well as the required username and password	
Encrypt	NP SERIAL ENCRYPTED	By default, Nitro PDF Pro encrypts the license code. Certain deployments require this setting to be disabled (see Chapter 3)	

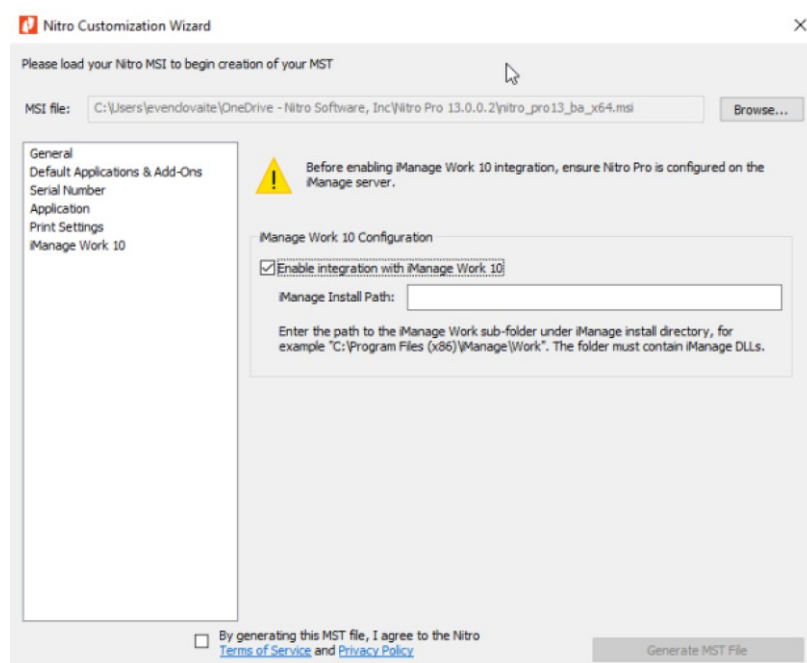
4.3.4 “Print” settings



Setting	MSI Property	Description	
Default Settings		In most cases, we recommend selecting “Default” from the dropdown.	
Optimize for PCL driver	(Registry) PrintBandSize, PrintBandCountForIgnore	If you experience issues when printing large image/graphic files to specific printers (typically Xerox brand PCL pull print drivers), selecting “Optimize for PCL Driver” is expected to resolve these specific printing issues. This setting can also be changed post-deployment for individual users via the registry key settings.	

4.3.5 “iManage Work 10” settings

Please refer to section 6.8 for full configuration settings for iManage.



Setting	MSI Property	Description
Enable integration with iManage Work 10		Checking this box will enable users to access documents stored in iManage Work 10
iManage install path		The path must be set to Work subfolder where Nitro PDF Pro can find iManage dlls. If iManage Install Path is missing, Nitro PDF Pro integration with iManage will not work and this may lead to the situation when the documents opened from web-client will remain checked out until manual check in.

4.4 ORCA

Orca is an MSI database editor provided as part of the Microsoft Windows SDK. For more information visit:

[https://msdn.microsoft.com/en-us/library/aa370557\(v=vs.85\).aspx](https://msdn.microsoft.com/en-us/library/aa370557(v=vs.85).aspx)

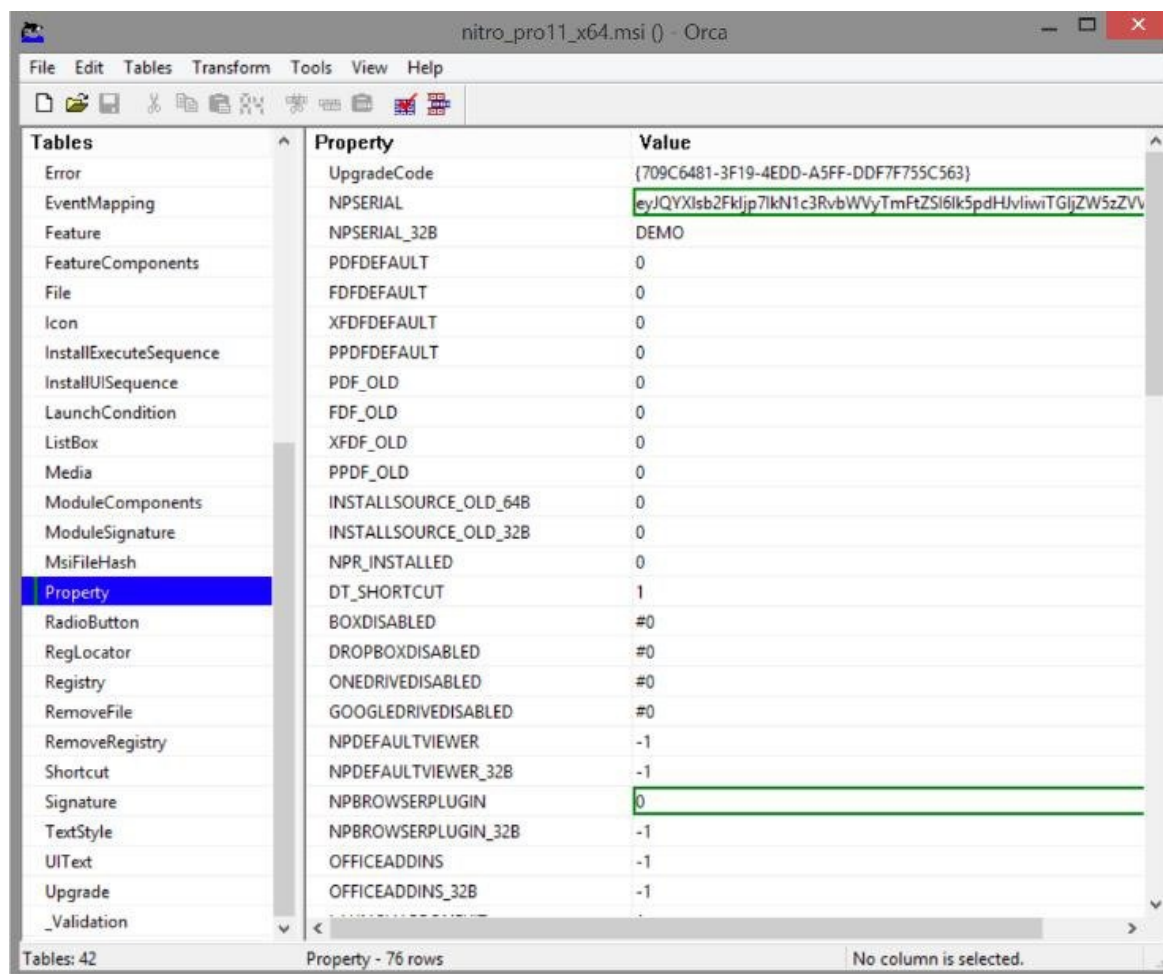
[https://msdn.microsoft.com/en-us/library/aa370834\(v=vs.85\).aspx](https://msdn.microsoft.com/en-us/library/aa370834(v=vs.85).aspx)

Orca enables you to create a Transform File (.mst) that can be used to customize an installation via a command line or with Group Policy Objects/Active Directory software deployment methods.

NOTE: ORCA can be used to make very extensive changes to the installation process, but not all of the possible options are documented in this guide. It is highly recommended that only experienced admins use this tool.

Example: Create an MST file that includes the license, does not install the Nitro PDF Pro Internet Explorer add-in, and enables the integration with Nitro Sign for eSignature and document collaboration.

- 1) Install Orca from the link above and start the program
- 2) Click on File > Open, and browse to the location of the Nitro PDF Pro installation MSI
- 3) Click Transform, and then click New Transform
- 4) Scroll down the left column and select the Property table.
- 5) Find NP SERIAL in the right column, and double click on the entry DEMO to edit. Replace this with your license number.
- 6) Find NPBROWSERPLUGIN and change the value to 0
- 7) Find CLOUDENABLE and change the value to 1
- 8) Your changes will be highlighted in green



9) Click on Transform > Generate Transform to save the .mst file.

5 Updating Nitro PDF Pro

5.1 Minor / Major release

The MSI installer does not automatically check for updates, because in many environments the end user will not have permission to install software updates. For users who are deploying with the default preferences, no additional steps need to be taken. Nitro PDF Pro can simply be delivered as an update via your chosen deployment tool.

If you have custom preferences embedded in a .cab file however, you will need to recreate the transform file first, then update using your chosen deployment tools.

To obtain the latest installation files, please contact your Nitro Customer Support Representative.

5.2 Preserving configuration settings

When upgrading Nitro PDF Pro to a major release, such as Nitro PDF Pro 12 to Nitro PDF Pro 13, some settings will be migrated silently.

Data that will automatically be migrated:

QuickSign Profiles
Custom Stamps
Digital IDs
Digital Signatures
Certificates
Security Profiles
Scanner Profiles

6 Special configurations

6.1 Setting a default PDF application using an Active Directory GPO

Microsoft has made significant changes to the way applications are able to set themselves as default applications for certain file types. Microsoft strongly recommends that application defaults are changed by users only, which is the only supported method. As such, applications can no longer be set as default during the installation process, and the only supported method for central control is to use the steps described below.

Summary of Steps

- 1) Create or obtain an XML file containing the desired default application associations, then distribute the XML file to all client machines targeted by the policy
- 2) Create a new, or edit an existing GPO to apply the XML file to client computers

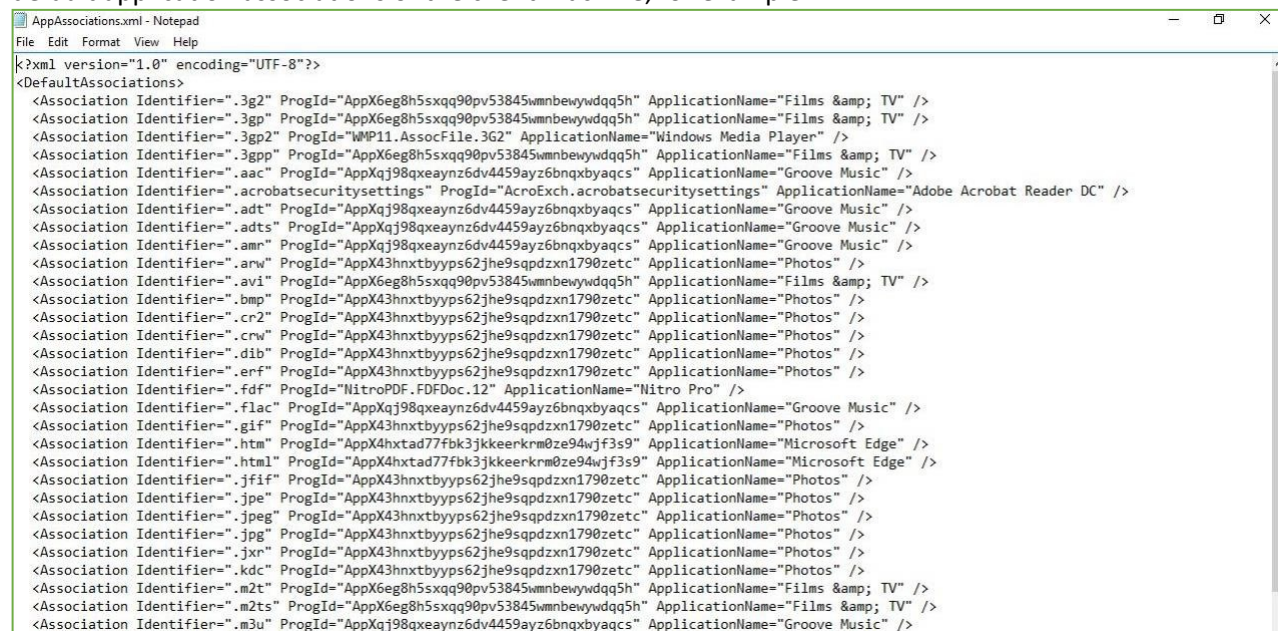
Screencast

A recording of the process can be viewed here for demonstration / clarification purposes:

<https://cdn.gonitro.com/product/se/gpo-demo.mp4>

Step 1: Create and Distribute the Associations XML File

The default application associations can be exported in XML form. The resulting XML file will contain all default application associations of the client machine, for example:



```
<?xml version="1.0" encoding="UTF-8"?>
<DefaultAssociations>
  <Association Identifier=".3g2" ProgId="AppX6eg8h5sxqq90pv53845wmnbewywdq5h" ApplicationName="Films & TV" />
  <Association Identifier=".3gp" ProgId="AppX6eg8h5sxqq90pv53845wmnbewywdq5h" ApplicationName="Films & TV" />
  <Association Identifier=".3gp2" ProgId="WMP11.AssocFile.3G2" ApplicationName="Windows Media Player" />
  <Association Identifier=".3gpp" ProgId="AppX6eg8h5sxqq90pv53845wmnbewywdq5h" ApplicationName="Films & TV" />
  <Association Identifier=".aac" ProgId="AppXqj98qxeaynz6dv4459ayz6bnqxyaqcs" ApplicationName="Groove Music" />
  <Association Identifier=".acrobatsecuritysettings" ProgId="AcroExch.acrobatsecuritysettings" ApplicationName="Adobe Acrobat Reader DC" />
  <Association Identifier=".adt" ProgId="AppXqj98qxeaynz6dv4459ayz6bnqxyaqcs" ApplicationName="Groove Music" />
  <Association Identifier=".adts" ProgId="AppXqj98qxeaynz6dv4459ayz6bnqxyaqcs" ApplicationName="Groove Music" />
  <Association Identifier=".amr" ProgId="AppXqj98qxeaynz6dv4459ayz6bnqxyaqcs" ApplicationName="Groove Music" />
  <Association Identifier=".arw" ProgId="AppX43hnxtbyyps62jhe9sqpdzxn1790zetc" ApplicationName="Photos" />
  <Association Identifier=".avi" ProgId="AppX6eg8h5sxqq90pv53845wmnbewywdq5h" ApplicationName="Films & TV" />
  <Association Identifier=".bmp" ProgId="AppX43hnxtbyyps62jhe9sqpdzxn1790zetc" ApplicationName="Photos" />
  <Association Identifier=".cr2" ProgId="AppX43hnxtbyyps62jhe9sqpdzxn1790zetc" ApplicationName="Photos" />
  <Association Identifier=".crw" ProgId="AppX43hnxtbyyps62jhe9sqpdzxn1790zetc" ApplicationName="Photos" />
  <Association Identifier=".dib" ProgId="AppX43hnxtbyyps62jhe9sqpdzxn1790zetc" ApplicationName="Photos" />
  <Association Identifier=".erf" ProgId="AppX43hnxtbyyps62jhe9sqpdzxn1790zetc" ApplicationName="Photos" />
  <Association Identifier=".fdf" ProgId="NitroPDF.FDFDoc.12" ApplicationName="Nitro Pro" />
  <Association Identifier=".flac" ProgId="AppXqj98qxeaynz6dv4459ayz6bnqxyaqcs" ApplicationName="Groove Music" />
  <Association Identifier=".gif" ProgId="AppX43hnxtbyyps62jhe9sqpdzxn1790zetc" ApplicationName="Photos" />
  <Association Identifier=".htm" ProgId="AppX4hxtad77fbk3jkkeerkrm0ze94wjf3s9" ApplicationName="Microsoft Edge" />
  <Association Identifier=".html" ProgId="AppX4hxtad77fbk3jkkeerkrm0ze94wjf3s9" ApplicationName="Microsoft Edge" />
  <Association Identifier=".jif" ProgId="AppX43hnxtbyyps62jhe9sqpdzxn1790zetc" ApplicationName="Photos" />
  <Association Identifier=".jpe" ProgId="AppX43hnxtbyyps62jhe9sqpdzxn1790zetc" ApplicationName="Photos" />
  <Association Identifier=".jpeg" ProgId="AppX43hnxtbyyps62jhe9sqpdzxn1790zetc" ApplicationName="Photos" />
  <Association Identifier=".jpg" ProgId="AppX43hnxtbyyps62jhe9sqpdzxn1790zetc" ApplicationName="Photos" />
  <Association Identifier=".jxr" ProgId="AppX43hnxtbyyps62jhe9sqpdzxn1790zetc" ApplicationName="Photos" />
  <Association Identifier=".kdc" ProgId="AppX43hnxtbyyps62jhe9sqpdzxn1790zetc" ApplicationName="Photos" />
  <Association Identifier=".m2t" ProgId="AppX6eg8h5sxqq90pv53845wmnbewywdq5h" ApplicationName="Films & TV" />
  <Association Identifier=".m2ts" ProgId="AppX6eg8h5sxqq90pv53845wmnbewywdq5h" ApplicationName="Films & TV" />
  <Association Identifier=".m3u" ProgId="AppXqj98qxeaynz6dv4459ayz6bnqxyaqcs" ApplicationName="Groove Music" />
</DefaultAssociations>
```

The file can be edited to include only the relevant file types / applications.



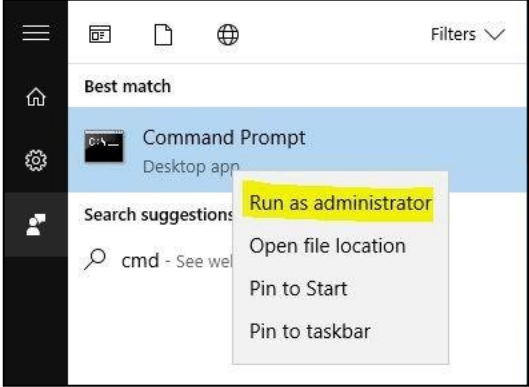
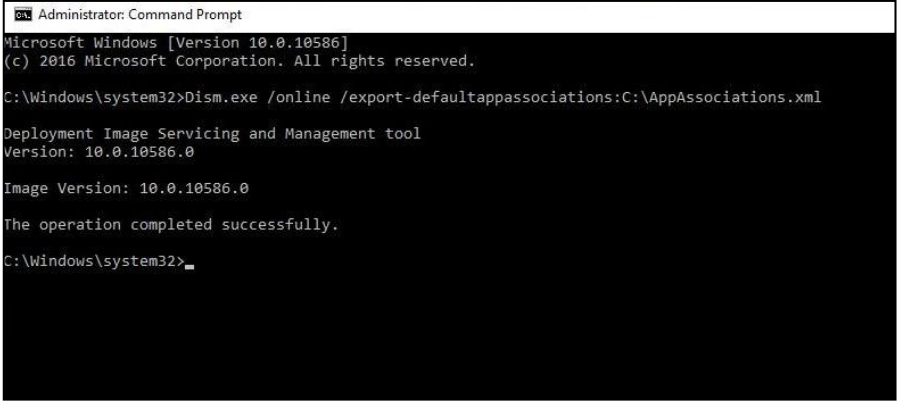
```
<?xml version="1.0" encoding="UTF-8"?>
<DefaultAssociations>
  <Association Identifier=".fdf" ProgId="NitroPDF.FDFDoc.12" ApplicationName="NitroPDF" />
  <Association Identifier=".pdf" ProgId="NitroPDF.Document.12" ApplicationName="NitroPDF" />
  <Association Identifier=".ppdf" ProgId="NitroPDF.PPDFDoc.12" ApplicationName="NitroPDF" />
  <Association Identifier=".xfdf" ProgId="NitroPDF.XFDFDoc.12" ApplicationName="NitroPDF" />
</DefaultAssociations>
```

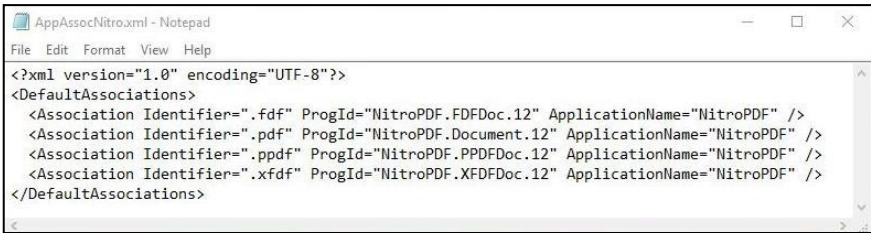
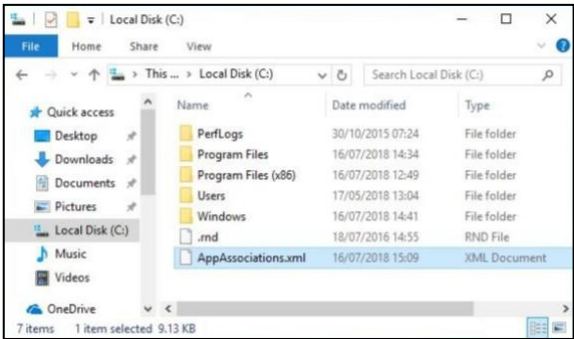
Alternatively, download and use the files linked below to set Nitro PDF Pro 12 or Nitro PDF Pro 11 as the default application for PDF, FDF, XFDF, and PPDF files:

Nitro PDF Pro 13: <https://cdn.gonitro.com/product/se/app-assoc-nitro-13.xml>

Nitro PDF Pro 12: <https://cdn.gonitro.com/product/se/app-assoc-nitro-12.xml>

Steps-by-step guide:

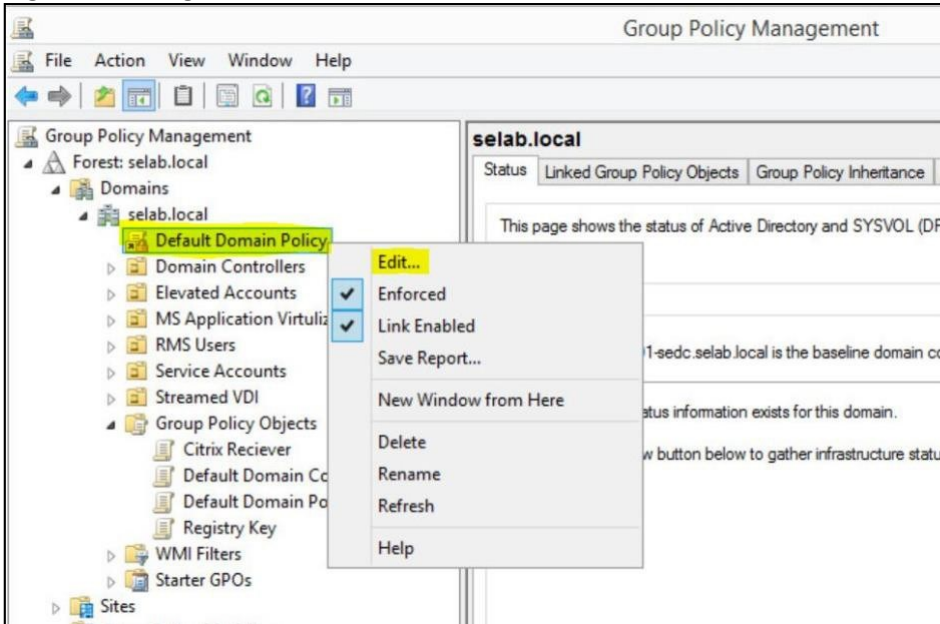
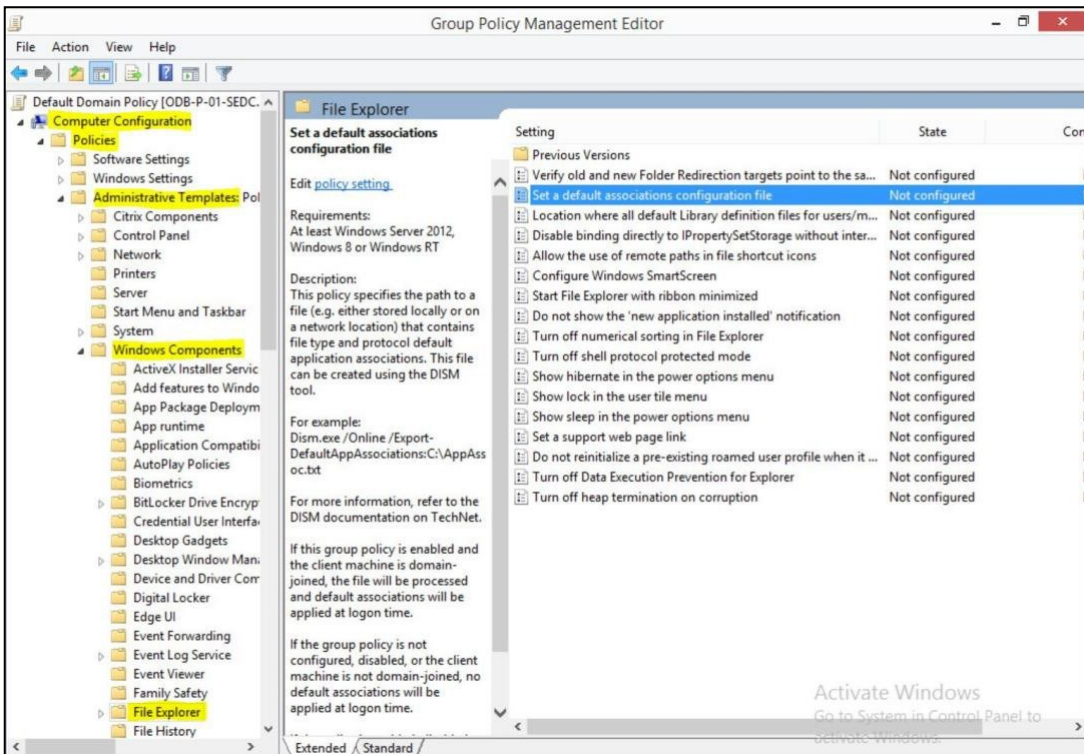
Step	Action
1.	<p><i>On a computer that has Nitro PDF Pro 12 installed and configured as the default application for the relevant file types, open an elevated command prompt.</i></p> 
2.	<p>Execute the following command: <i>Dism.exe /online /export-defaultappassociations:<path and filename></i></p> <p>Example: Dism.exe /online /export-defaultappassociations:C:\AppAssociations.xml</p> 

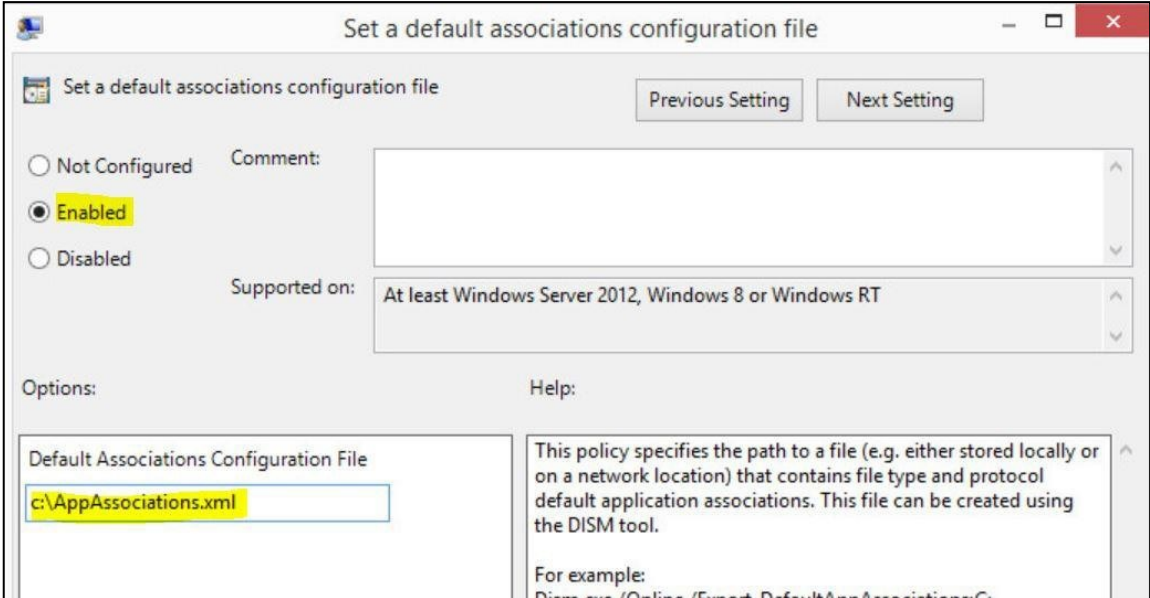
Step	Action
3.	<p>Open the XML file in a text editor e.g. Notepad and remove all "<Association Identifier=..." entries not referring to Nitro PDF Pro.</p> <p>Do not remove any other lines. The resulting file should look like this:</p> 
4.	<p>This XML file needs to be accessible from all client machines that require the settings to be changed. The easiest and most reliable option would be to copy the file to the same location on all clients, e.g. C:\AppAssociations.xml</p> 
5.	<p>The file could also reside on a mapped network drive that all clients have access to, e.g. P:\AppAssociations.xml. In this case, ensure that:</p> <ul style="list-style-type: none"> - All clients use the same drive letter for this location - The drive is mapped before the policy setting is applied <p><u>If the policy setting is unable to access the file in the specified location, the change of default application association will fail without any error messages.</u></p>

Step 2: Apply the GPO Setting

The GPO setting described in the steps below will configure a policy to force client computers to use a specific file for their application defaults. The policy setting only contains the path to the file, which needs to be made available to all applicable client machines.

Step-by-step guide:

Step	Action
1.	<p>Open the Group Policy Management console, create a new policy or select an existing one. Right click and go to “Edit”.</p> 
2.	<p>Find the setting “Set a default associations configuration file” in Computer Configuration > Administrative Templates > Windows Components > File Explorer. Double-click on it to open the configuration window.</p> 

Step	Action
3.	<p>Set the policy to “Enabled” and specify a valid path to the XML file created in step 1 - “valid” meaning it is accessible from all client machines this policy applies to, at the time the policy is applied!</p> <p>Example: In the screenshot the configuration file option is set as C:\AppAssociations.xml</p> <p>This means that for the policy to apply successfully, any relevant client machine MUST have a copy of the AppAssociations.xml file in the root of its respective C drive!</p> 
4.	Click ok to confirm the configuration change, then close the policy editor window.

NOTE: The path in the “Options” section of the policy is relative, i.e. if you configure the location of the file to be used as “C:\...” make sure the XML file exists on all client computers in that location. If you use a mapped network drive instead, ensure all clients have access to it, and that the mapping occurs before the policy applies, or it will fail.

NOTE: The file type association will be applied every time the policy applies. If a user manually changes this setting, or another application changes it, it will be reset with the next policy refresh (e.g. reboot).

6.2 Setting Default Applications using PowerShell Script

A PowerShell script “set-nitro-defaults” allows to set Nitro PDF Pro as default application for viewing PDF files and choose default Internet Explorer add-ons for viewing PDF files in the browser.

Download the “Set Nitro as Default Application” script from:

Business Installers: <https://www.gonitro.com/installers/business/v13/msi/download>

Enterprise Installers: <https://www.gonitro.com/installers/enterprise/v13/msi/download>

By running this script, Nitro PDF Pro will be set as a default application at the local machine level (HKLM) for all users. You can also choose to set Nitro PDF Pro or Acrobat Internet Explorer add-on as default, which will enable users to view PDF files in the chosen IE add-on.

Preconditions

- 1) Nitro PDF Pro must be installed on user's machines
- 2) Adobe Acrobat (Reader or Pro) must be installed on user's machines if setting Acrobat IE add-on as default (this condition is not verified as part of the script)

Parameters

The script includes three possible command line parameters, which can be used in different sequence.

Command Line	Outcome	OS Version
-set_nitro_ie_plugin	Sets Nitro PDF Pro IE add-on as default for opening PDFs in browser	Windows 8.1 and 10
-setacrobat_ie_plugin	Sets Acrobat IE add-on as default	Windows 8.1 and 10

Example 1

```
powershell -nopprofile -executionpolicy bypass -file ".\set-nitro-defaults.ps1" -set_nitro_default_viewer -set_nitro_ie_plugin
```

After script execution, Nitro PDF Pro will be set as a default PDF viewer in system settings and Nitro PDF Pro add-on will be set as default Internet Explorer add-on for PDF viewing in Internet browser.

Example 2

```
powershell -nopprofile -executionpolicy bypass -file ".\set-nitro-defaults.ps1" -set_acrobat_ie_plugin
```

After script execution Acrobat add-on will be set as default Internet Explorer add-on for PDF viewing in Internet browser.

Example 3

```
powershell -nopprofile -executionpolicy bypass -file ".\set-nitro-defaults.ps1" -set_nitro_default_viewer -set_acrobat_ie_plugin
```

After script execution Nitro PDF Pro will be set as default PDF viewer in system settings and Acrobat add-on will be set as default Internet Explorer add-on for PDF viewing in Internet browser.

6.3 Setting Default Internet Explorer add-ons

Nitro PDF Pro Internet Explorer add-ons

Nitro PDF Pro offers two add-ons for Internet Explorer:

- PDF Viewer add-on for opening files within the IE browser
- PDF Viewer add-on for opening files from SharePoint 2016 locations

Both add-ons are installed simultaneously; Nitro PDF Pro does not offer a way to install them separately. The IE add-ons are compatible with Internet Explorer v11.

Internet Explorer does not offer a method in its user interface to change the default IE add-on setting, only to enable/disable individual add-ons. If one is set to be the default and is disabled, IE will not automatically use the other one, but typically fail to open PDFs at all.

Note:

Nitro PDF Pro SharePoint add-on can work alongside other non-SharePoint PDF add-ons. Internet Explorer will not automatically use other add-ons to open documents. For example, a user can have a non-SharePoint Acrobat add-on set as default **and also** use Nitro PDF Pro SharePoint add-on for opening files from within SharePoint.

Setting Nitro PDF Pro IE add-ons as default

If a user has multiple PDF Viewer add-ons installed for Internet Explorer (e.g. the Nitro IE add-on and also the Acrobat add-on), one of them will be set as the default and used by IE to open PDF files. Typically, the default is the last one installed for the generic IE add-on.

There are several ways to set Nitro PDF Pro IE add-on as default:

1. Via Deployment Utility, when deploying Nitro PDF Pro (deployment teams) ([Section 4.3](#))
2. By running a PowerShell script (deployment teams) ([Section 6.3](#))
3. By changing a registry key (below)
4. By changing IE defaults in Nitro PDF Pro preferences (individually) (refer to user

guide)

Note

When Adobe Updater is run:

- Adobe Acrobat will become a default IE add-on for viewing PDF files
- Nitro PDF Pro SharePoint IE add-on will always remain a default, even after Adobe Updates

Recommendations

Setting and keeping Nitro PDF Pro IE add-ons as default

It is recommended to set Nitro PDF Pro IE add-on as default, which will open documents in Nitro PDF Pro IE add-on by default, unless customers must work with XFA documents.

If you have Adobe Acrobat in your organization and run updates regularly, each time an update is run, Adobe will become a default IE add-on. In such case, it is recommended to:

- Run a PowerShell script right after Adobe update, to ensure Nitro PDF Pro remains a default on

users' machines.

- Users can change the default individually by changing the registry key
- Users can change the default in Nitro PDF Pro Preferences

XFA documents & setting Adobe Acrobat IE add-on as default

When users must work with XFA documents (XML Forms Architecture) majority of the time, it is recommended to set Adobe Acrobat IE add-on as default. Nitro PDF Pro does not fully support XFA documents and users may be unable to work with dynamic XFA documents within Nitro PDF Pro.

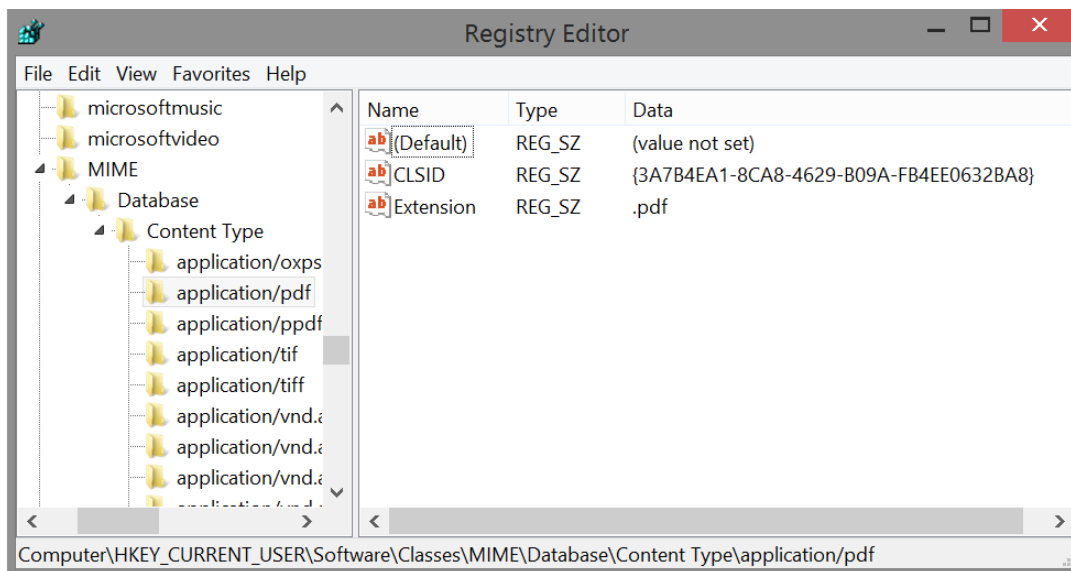
Note

If users must work with XFA documents occasionally, it is recommended to set Nitro PDF Pro IE add-on as default but enable opening PDF documents in Adobe Acrobat from Nitro PDF Pro IE add-on. In such cases, users will have Nitro PDF Pro IE add-on as default, but will have an ability to open some files, such as XFA in Adobe Acrobat. **(Section 4.3 Default Applications and Add-ons).**

6.4 Changing Internet Explorer Defaults via Registry Key

It is possible to set the default by editing the following registry key:

HKEY_CURRENT_USER\Software\Classes\MIME\Database\Content Type\application/pdf

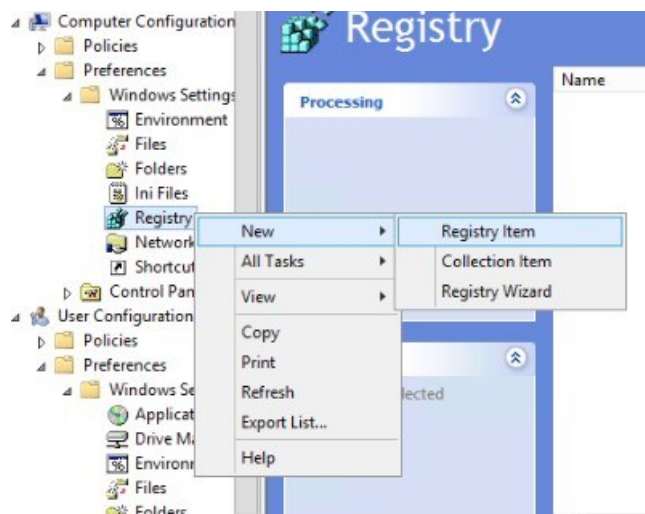


Set the value for “CLSID” to one of the following values:

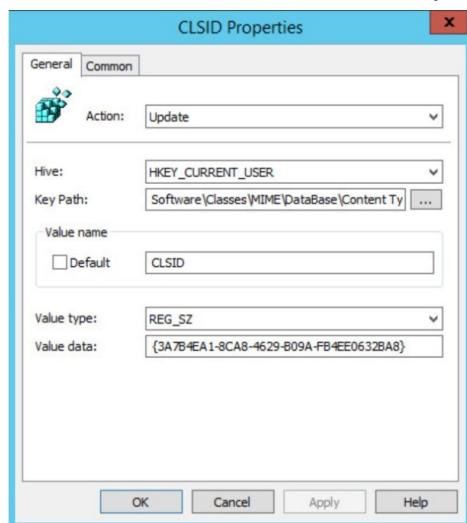
- 1) Use the Nitro IE add-on as default:
{3A7B4EA1-8CA8-4629-B09A-FB4EE0632BA8}
- 2) Use the Adobe add-on as default:
{CA8A9780-280D-11CF-A24D-444553540000}

Using a Group Policy to deploy a registry setting

- 1) Create a new Active Directory GPO or edit an existing one
- 2) Go to the Settings tab. Right-click on User Configuration and select Edit
- 3) Expand Preferences > Windows Settings, right-click on “Registry” and select New > Registry Item



- 4) Select the action “Update”, then set the following options:
 Hive: HKEY_CURRENT_USER
 Key Path: Software\Classes\MIME\Database\Content Type\application/pdf
 Value name: CLSID
 Value type: REG_SZ
- 5) Enter the following information in the “Value data” field, according to your preference:
 Nitro IE add-on as default: {3A7B4EA1-8CA8-4629-B09A-FB4EE0632BA8}
 Adobe add-on as default: {CA8A9780-280D-11CF-A24D-444553540000}



6.5 Preventing Nitro PDF Pro Outlook add-ins from being disabled

Programs in Office 2013 and later versions provide add-in resiliency, meaning that apps will disable an add-in if it performs slowly for any reason. Add-ins can be enabled and/or protected from being auto-disabled by editing registry settings accordingly.

See also: <https://msdn.microsoft.com/en-us/vba/outlook-vba/articles/support-for-keeping-add-ins-enabled>

Ensure Nitro PDF Pro add-ins are loaded at startup

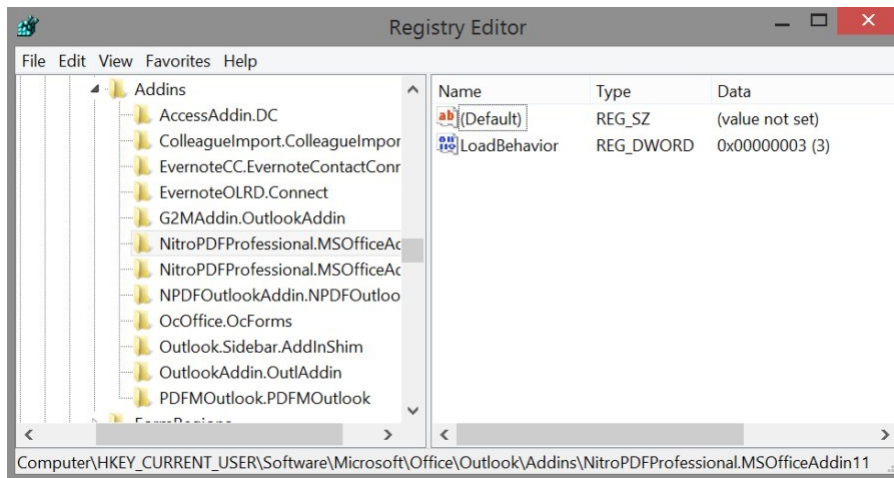
To ensure the Nitro PDF Pro add-in always loads at startup, you can alter the “Load Behavior” registry keys located under:

(64-bit Office HKCU) HKEY_CURRENT_USER\Software\Microsoft\Office\Outlook\Addins\NitroPDFProfessional.MSOfficeAddinXX

(64-bit Office HKLM)

HKEY_LOCAL_MACHINE\SOFTWARE\Wow6432Node\Microsoft\Office\Word\Addins\NitroPDFProfessional.MSOfficeAddinXX

NOTE: Replace “XX” in the registry keys above with your version of Nitro PDF Pro, e.g. “12”. Nitro recommends setting the value to 3 to load them at startup.



3 - Loaded - Load at startup

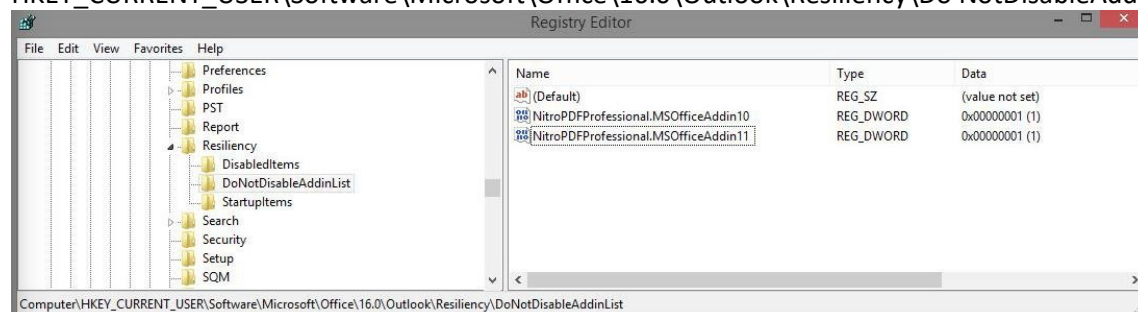
The application tries to load the VSTO Add-in when the application starts. This is the default value when you build or publish a VSTO Add-in in Visual Studio. If the application successfully loads the VSTO Add-in, the LoadBehavior value remains 3. If an error occurs when loading the VSTO Add-in, the LoadBehavior value changes to 2, and remains at 2 after the application closes.

Prevent Nitro PDF Pro add-ins from being disabled automatically

To ensure that the Add-in never becomes disabled, Nitro recommends adding the ClassID **NitroPDFProfessional.MSOfficeAddinXX** to the 'DoNotDisableAddinList':

NOTE: Replace "XX" in the value above with your version of Nitro PDF Pro, e.g. "13".

HKEY_CURRENT_USER\Software\Microsoft\Office\16.0\Outlook\Resiliency\Do NotDisableAddinList



NOTE: The above registry keys can be deployed via Active Directory GPO. Please see [Chapter 6.2](#) for an overview of this method.

6.6 Rights Management Services (RMS) and Azure Information Protection (AIP)

RMS is older integration that will be deprecated by Microsoft in September 2020.

To access PDF files that have been protected using Microsoft's Rights Management technology, the machines accessing the protected files will need to install Microsoft's [Active Directory Rights ManagementService\(ADRMS\)Client2.1](#) and [MicrosoftOnlineServicesSign-InAssistant](#). Nitro PDF Pro will then be able to decrypt RMS protected PDF files and grant RMS defined permissions to users.

Azure Information Protection is successor to RMS. To enable Azure Information Protection- check the box in the Deployment Tool. It is also suggested to contact Nitro Support for additional assistance in enabling AIP.

We do not recommend using both integrations at the same time.

6.7 iManage Work 10

6.7.1 iManage Work 10 integration deployment

Step 1: Add Nitro PDF Pro to the allowed apps on the iManage server

NOTE: if you have more than one iManage server, this step must be done on EACH iManage server.

In iManage Control Center (IMCC) add Nitro PDF Pro to the allowed applications:

- if you use an account on [cloudimanager.com](#): select and add Nitro PDF Pro from Application List
- if you use other iManage 10.2+ server (cloud or on-premises): add Nitro PDF Pro manually with predefined Client ID:

Client ID / API Key	0127f653-a333-483f-b6b4-fb452b5959a7
Client Secret / API Secret	<autogenerated>
Redirect URL	http://localhost/

Application Type	Native
------------------	--------

Step 2: Register Nitro PDF Pro as an integrated application

NOTE: if you have more than one iManage server, this step must be done on EACH iManage server.

1. Download **imWorkOptions.xml** file from IMCC. If there is no such file, the template can be downloaded from iManage Help Center or created manually.
2. In imWorkOptions.xml, add the section that marks Nitro PDF Pro as integrated application:

```
<ws_options>
  <ws_option name="integration">
    <key name="IntegratedProcesses" value="NitroPDF"/>
  </ws_option>
</ws_options>
```

IMPORTANT:

- Ensure that “<ws_options>” does not contain attribute “applyToAll”. If this attribute exists – please, remove it;
- The value of “IntegratedProcesses” has to be exactly “NitroPDF” as it corresponds to the name of Nitro PDF Pro process on a client.

3. Upload the result document back to the IMCC.
4. To update the configuration on a client side, it is required to reconnect to the iManage server.

For more information see [iManage Work Desktop for Windows Customization Guide 10.2.4.pdf](#) or newer.

Step 3: Enable refresh token for Nitro PDF Pro on iManage server

NOTE: if you have more than one iManage server, this step must be done on EACH iManage server.

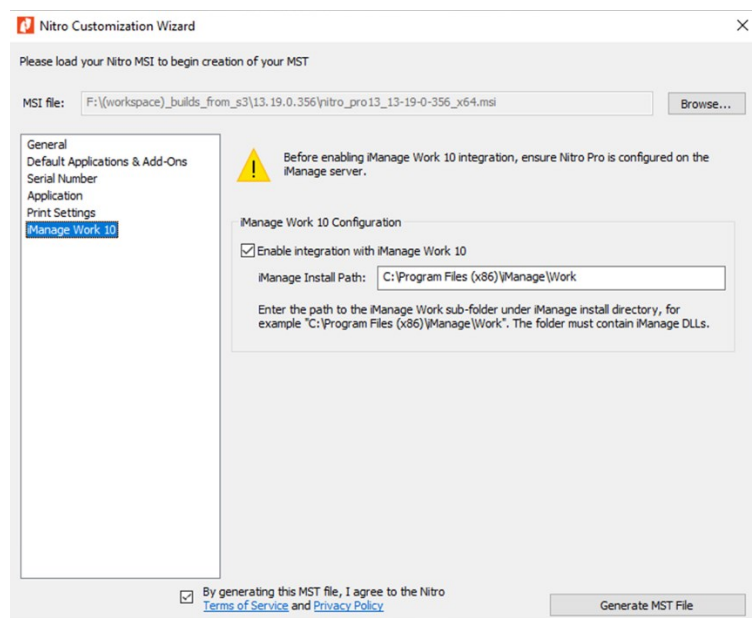
1. Download the "iManage: enable refresh token" script from:
 - a. Business Installers:
<https://www.gonitro.com/installers/business/v13/msi/download>
 - b. Enterprise Installers:
<https://www.gonitro.com/installers/enterprise/v13/msi/download>
2. Unpack zip file and follow the instructions from “readme.txt”.

Step 4: Setup client side

NOTE: if you have more than one iManage server, this step must be done on EACH iManage server.

On client workstations:

1. Ensure that **iManage Work Desktop for Windows 10.5 or newer** (also known as iManage Agent) is running and connected to the iManage server.
2. Before installing Nitro PDF Pro, generate MST file with iManage integration enabled by Nitro PDF Pro Deployment Tool:



IMPORTANT: The path must be set to Work subfolder where Nitro PDF Pro can find iManage dlls. If *iManage Install Path* is missing, Nitro PDF Pro integration with iManage will not work and this may lead to the situation when the documents opened from web-client will remain checked out until manual check in.

1. Install Nitro PDF Pro with a created MST file. For more details see section [6.7.2 “How to enable iManage integration with Deployment Tool”](#).
2. Set Nitro PDF Pro as a default PDF viewer

6.7.2 How to enable iManage integration with Deployment Tool

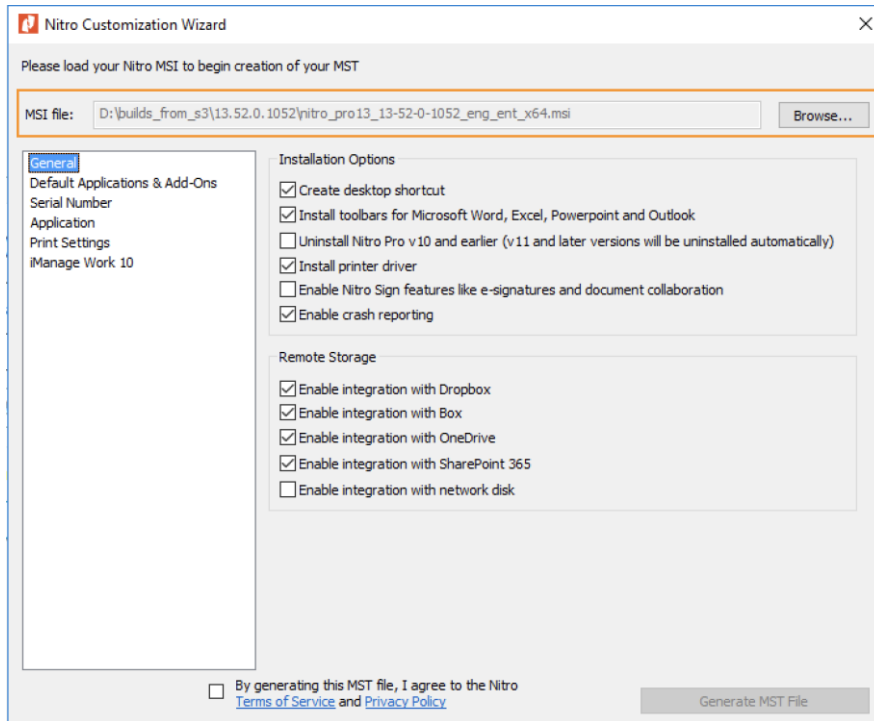
Step 1: Preconditions

1. Uninstall the previous version of Nitro PDF Pro
2. Download Nitro PDF Pro installer and related to it Deployment Tool. **NOTE:** it is important to have Deployment Tool of the same version as the Nitro PDF Pro installer.

Step 2: Prepare MST file with enabled iManage integration

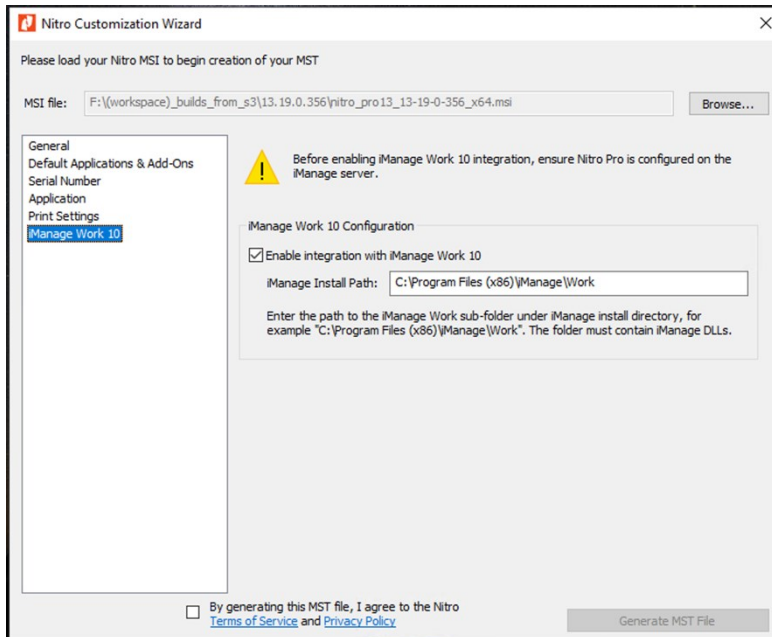
1. Start Deployment Tool

2. In the top right corner, click on a Browse... button and select the downloaded Nitro PDF Pro installer (MSI file). For example:

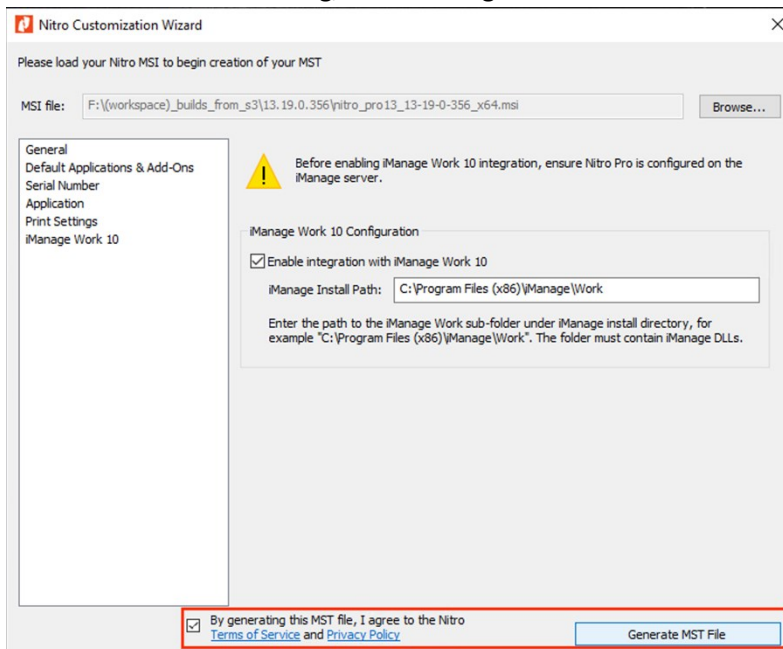


3. On the left panel, select “iManage Work 10” section.
4. Select check box “Enable integration with iManage Work 10”.

5. In the edit field "*iManage Install Path*" set path to the Work subfolder under the iManage installation folder. **NOTE:** this subfolder must contain the iManage DLLs. For example:



6. At the bottom of the dialog, check the agreement check box and click "*Generate MST File*". For example:



7. When MST is generated successfully the message will appear with the path to the MST file.
 8. [IMPORTANT] Close the deployment tool dialog.

6.8 SharePoint Online extension

The SharePoint Online extension is a SharePoint Framework-based application that allows users to open a SharePoint Online document in Nitro PDF Pro desktop application from within the web browser.

With the Nitro PDF Pro extension for SharePoint Online, users no longer need to download, edit, and upload their documents manually when they want to work with SharePoint Online. This three-step workflow can now be done in just a couple of clicks.

6.8.1 SharePoint Online extension deployment

Step 1: Preconditions

1. To deploy the SharePoint Online extension the SharePoint admin permission is required
2. The extension works with the sites with Modern View

Step 2: Download the SharePoint Online extension from:

Business Installers: <https://www.gonitro.com/installers/business/v13/msi/download>

Enterprise Installers: <https://www.gonitro.com/installers/enterprise/v13/msi/download>

NLS Installers: <https://www.gonitro.com/installers/nls/v13/msi/download>

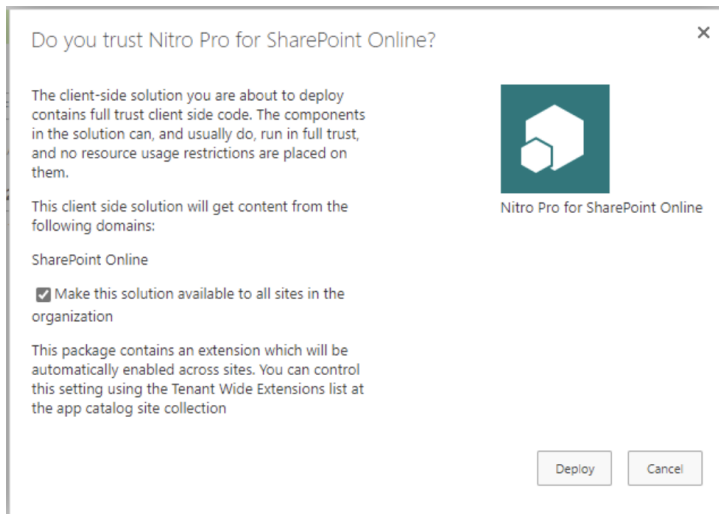
NOTE: the extension is not available on Microsoft Marketplace as each package requires to work with a compatible Nitro PDF Pro version.

Step 3: Ensure that the downloaded version is compatible with the installed version of Nitro PDF Pro. In order for the Nitro PDF Pro SharePoint Online extension to work properly, it is recommended to have a Nitro PDF Pro version that corresponds to the deployed package version installed:

SharePoint Online extension	Nitro PDF Pro
1.0.0.8	13.45
1.2.0.x	13.46 - 13.48
1.3.0.x	13.49+

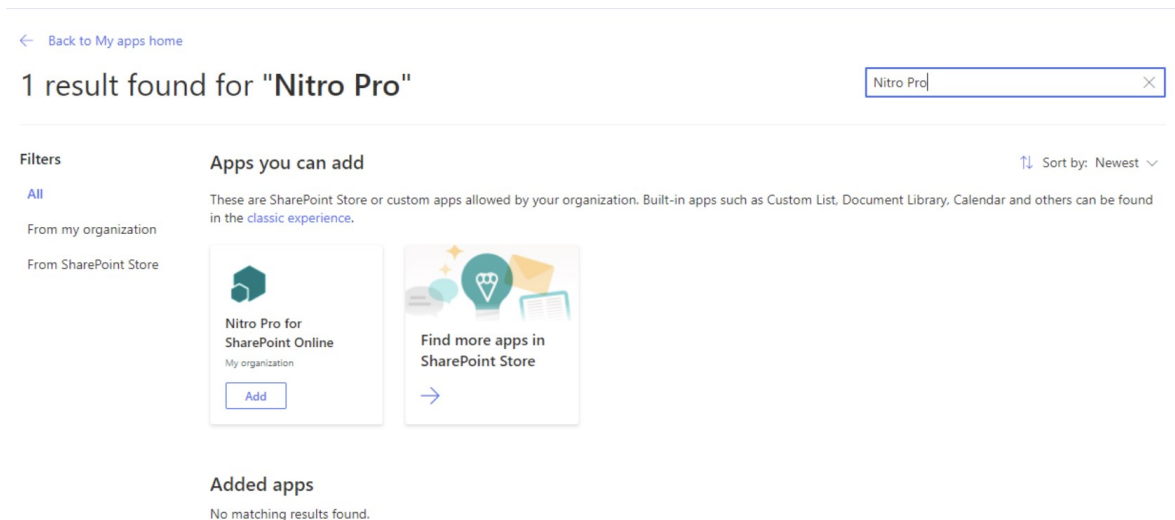
Step 4: Follow the instructions from Microsoft: [Use the App Catalog to make custom business apps available for your SharePoint environment](#). **Note:** SharePoint admin permissions may be required.

During the deployment, SharePoint Online gives an option to deploy the package tenant wide or per site. If the package is deployed tenant wide it will be automatically available for use on all sites and sub-sites of the current SharePoint tenant.

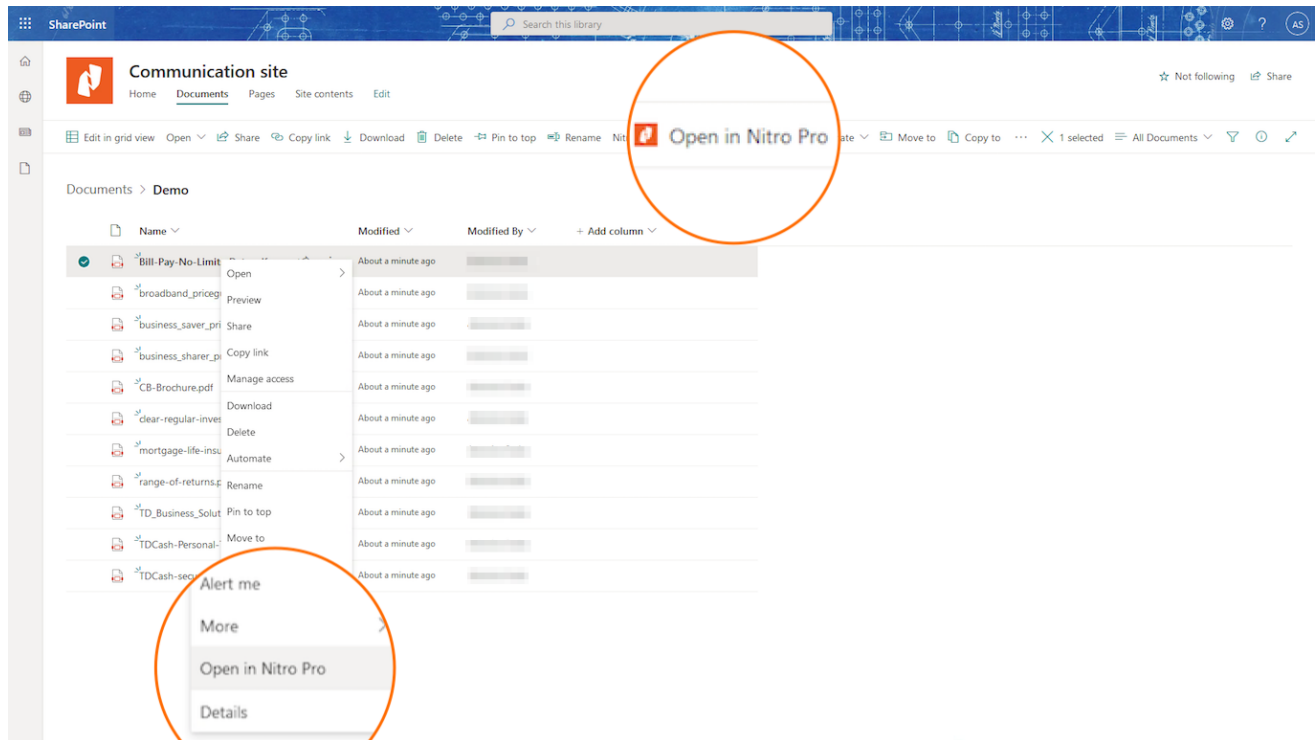


Otherwise, after deployment, the package should be enabled manually on each site where it should be used. For this:

1. Open SharePoint site settings → Add an app.
2. From a menu on the left select “From my organization”
3. Search for “Nitro PDF Pro for SharePoint Online” application and click Add



If the SharePoint extension is deployed correctly, the “Open in Nitro PDF Pro” option will appear on the command bar and in the document context menu on a site:



6.8.2 Consent

The first time a user opens a document using the SharePoint Online extension, they may be requested to accept consent. It is recommended to log in to SharePoint Online from Nitro PDF Pro with admin permissions first and accept the consent on behalf of the organization.

The full list of the permissions that Nitro PDF Pro may request is:

Permissions	Type	Description	Needed for feature	Notes
Microsoft Graph				
User.Read	Delegated	Sign in and read user profile	<ul style="list-style-type: none"> - SharePoint Online - OneDrive - Azure Information Protection 	Allows sign in, called "generally required" in MS docs.
Files.ReadWrite	Delegated	Have full access to user files	<ul style="list-style-type: none"> - OneDrive - SharePoint Online 	
Sites.Manage.All	Delegated	Create, edit, and delete items and list in site collections	<ul style="list-style-type: none"> - SharePoint Online 	Needed to upload files to SharePoint.
Offline_access	Delegated	Maintain access to data you have given it access to	<ul style="list-style-type: none"> - OneDrive - SharePoint Online 	Give access to refresh tokens, called "generally required" in MS docs.
Azure Rights Management Service				
user_impersonation	Delegated	Create and access protected content for user	<ul style="list-style-type: none"> - Azure Information Protection 	Requested by MIP SDK when reading policy and labels.
Microsoft Information Protection Sync Services				
UnifiedPolicy.User.Read	Delegated	Read all unified policies a user has access to	<ul style="list-style-type: none"> - Azure Information Protection 	Requested by MIP SDK when reading policy and labels

6.8.3 Explaining OAUTH Access Token management

The access token is stored in

C:\Users\<user>\AppData\Roaming\Nitro\Pro\13\ms_graph_token_cache.msaf
and is handled and encrypted using the **Microsoft.Identity.Client** library.

To protect *ms_graph_token_cache.msaf* Nitro PDF Pro is using Windows Data Protection API, which encrypts data with the current user's credentials.

The only access information that Nitro PDF Pro handles is the login e-mail, and it stores it directly in the registry key:

HKEY_CURRENT_USER\Software\Nitro\Pro\13\Settings\MicrosoftAccount\email

Everything else is handled via the AIP SDK (that will end in the MSI and MSIPC folder) or the **Microsoft.Identity.Client**.

More information about the Microsoft Identity platform and authentication can be found [here: https://docs.microsoft.com/en-us/azure/active-directory/develop/v2-oauth2-auth-code-flow](https://docs.microsoft.com/en-us/azure/active-directory/develop/v2-oauth2-auth-code-flow).

7 Contacting Support

If you experience any issues, please contact our support team through our website: <http://www.gonitro.com/support>

To ensure a quicker response, please include as much information as possible, including

- Company Name
- Your Nitro Account Executive
- Serial number(s)
- License type(s)
- Application version
- Operating System(s)
- Anti-virus software used
- Deployment methods

For Remote Desktop Services/XenApp deployments please also include the following in your support request:

- Server Operating System
- Application Delivery method (RDS, Streamed, Published App, Published Desktop, etc.)
- Size of farm
- Virtualization methods (if any)